

FHL5 Polyclonal Antibody

Catalog number: 12650-2-AP

Size: 40 µg/150 µl

Source: Rabbit

Isotype: IgG

Synonyms:

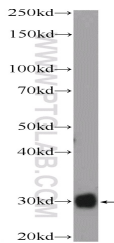
FHL5; ACT, Activator of CREM

in testis, dJ393D12.2, FHL 5,

FHL5, FLJ33049, four and a half

LIM domains 5, KIAA0776, RP3

393D12.2



mouse heart tissue were subjected to SDS PAGE followed by western blot with 12650-2-AP(FHL5 Antibody) at dilution of 1:2000

Applications

Tested applications:	ELISA, WB
Species specificity:	Human,Mouse,Rat; other species not tested.
Calculated FHL5 MW:	284aa,33 kDa
Observed FHL5 MW:	33 kDa
Positive WB detected in	Mouse heart tissue, human heart tissue
Recommended dilution:	WB: 1:1000-1:10000

Application key: WB = Western blotting, IHC = Immunohistochemistry, IF = Immunofluorescence, IP = Immunoprecipitation

Immunogen information

Immunogen:	Ag3364
GenBank accession number:	BC021723
Gene ID (NCBI):	9457
Full name:	Four and a half LIM domains 5

Product information

Purification method:	Antigen affinity purification
Storage:	PBS with 0.02% sodium azide and 50% glycerol pH 7.3. Store at -20°C.