

## SMN Polyclonal Antibody

Catalog number: 11708-1-AP

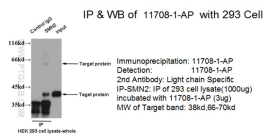
Size: 50 µg/150 µl

Source: Rabbit

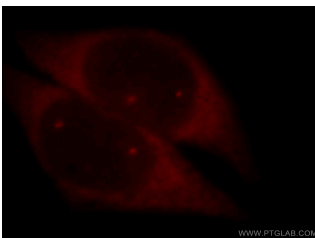
Isotype: IgG

Synonyms:

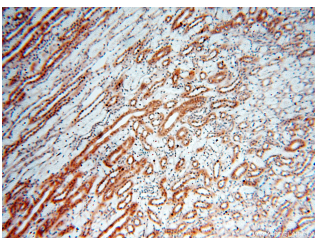
SMN2; C BCD541, Component of gems 1, FLJ76644, Gemin 1, SMN, SMN1, SMN1,SMN, SMN2, SMNC, SMNT, Survival motor neuron protein



IP result of anti-SMN2(11708-1-AP for IP and Detection).



Immunofluorescent analysis of HeLa cells, using SMN2 antibody 11708-1-AP at 1:25 dilution and Rhodamine-labeled goat anti-rabbit IgG (red).



Immunohistochemical of paraffin-embedded human kidney using 11708-1-AP(SMN2 antibody) at dilution of 1:100 (under 10x lens)

### Background

Spinal muscular atrophy (SMA) is an autosomal recessive neurodegenerative disease characterized by loss of anterior horn cells in the spinal cord and concomitant symmetrical muscle weakness and atrophy (PMID: 16364894 ). SMA is caused by deletion or mutations of the survival motor neuron (SMN1) gene. SMA patients lack a functional SMN1 gene, but they possess an intact SMN2 gene, which though nearly identical to SMN1, is only partially functional (PMID: 17355180). A large majority of SMN2 transcripts lack exon 7, resulting in production of a truncated, less stable SMN protein (PMID: 10369862). The level of SMN protein correlates with phenotypic severity of SMA. This antibody, 11708-1-AP, raised against the recombinant full-length human SMN2 protein, recognizes all isoforms of SMN protein.

### Applications

Tested applications:

ELISA, IHC, IF, IP, WB

Cited applications:

ELISA

Species specificity:

Human, Mouse, Rat; other species not tested.

Cited species:

Human, mouse

Calculated SMN MW:

282aa, 30 kDa

Observed SMN MW:

38 kDa; 66-70 kDa

Positive WB detected in

HEK-293 cells, A549 cells, HeLa cells, HepG2 cells, Jurkat cells, K-562 cells, mouse testis tissue

Positive IP detected in

HEK-293

Positive IHC detected in

Human kidney tissue, human brain tissue, human heart tissue, human lung tissue, human ovary tissue, human placenta tissue, human skin tissue, human spleen tissue, human testis tissue

Positive IF detected in

HeLa cells, HepG2 cells

Recommended dilution:

WB: 1:500-1:5000

IP: 1:500-1:5000

IHC: 1:20-1:200

IF: 1:10-1:100

Application key: WB = Western blotting, IHC = Immunohistochemistry, IF = Immunofluorescence, IP = Immunoprecipitation

### Immunogen information

Immunogen:

Ag2260

GenBank accession number:

BC000908

Gene ID (NCBI):

6607

Full name:

Survival of motor neuron 2, centromeric

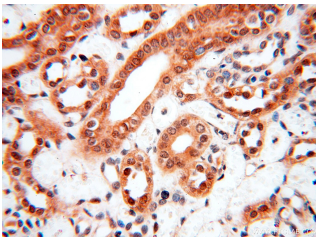
### Product information

Purification method:

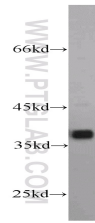
Antigen affinity purification

Storage:

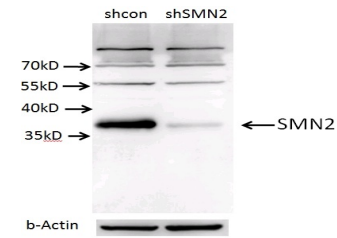
PBS with 0.1% sodium azide and 50% glycerol pH 7.3. Store at -20°C.



Immunohistochemical of paraffin-embedded human kidney using 11708-1-AP(SMN2 antibody) at dilution of 1:100 (under 40x lens)



HEK-293 cells were subjected to SDS PAGE followed by western blot with 11708-1-AP(SMN2 antibody) at dilution of 1:1000



A549 cells (shcontrol and shRNA of SMN) were subjected to SDS PAGE followed by western blot with 11708-1-AP (SMN2 antibody) at dilution of 1:1000. (Data provided by Angran Biotech ([www.miRNAlab.com](http://www.miRNAlab.com))).