

## SYTL2 Polyclonal Antibody

Catalog number: 12359-1-AP

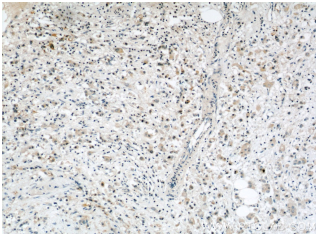
Size: 61 µg/150 µl

Source: Rabbit

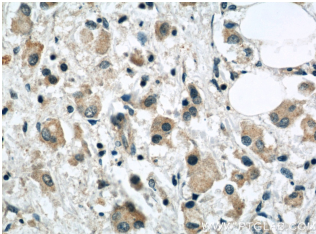
Isotype: IgG

Synonyms:

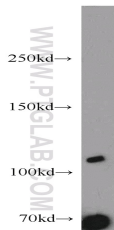
SYTL2; CHR11SYT, Exophilin 4, KIAA1597, SGA72M, SLP2, SLP2A, synaptotagmin like 2, Synaptotagmin like protein 2, SYTL2



Immunohistochemical of paraffin-embedded human breast cancer using 12359-1-AP(SYTL2 antibody) at dilution of 1:50 (under 10x lens)



Immunohistochemical of paraffin-embedded human breast cancer using 12359-1-AP(SYTL2 antibody) at dilution of 1:50 (under 40x lens)



Jurkat cells were subjected to SDS PAGE followed by western blot with 12359-1-AP(SYTL2 antibody) at dilution of 1:500

### Applications

Tested applications:	ELISA, WB, IHC
Species specificity:	Human, Mouse, Rat; other species not tested.
Calculated SYTL2 MW:	934aa, 105kd
Observed SYTL2 MW:	100-105kd
Positive WB detected in:	Jurkat cells
Positive IHC detected in:	Human breast cancer tissue
Recommended dilution:	WB: 1:250 - 1:1000 IHC: 1:25 - 1:100

Application key: WB = Western blotting, IHC = Immunohistochemistry, IF = Immunofluorescence, IP = Immunoprecipitation

### Immunogen information

Immunogen:	Ag3023
GenBank accession number:	BC015540
Gene ID (NCBI):	54843
Full name:	Synaptotagmin-like 2

### Product information

Purification method:	Antigen affinity purification
Storage:	PBS with 0.1% sodium azide and 50% glycerol pH 7.3. Store at -20°C.