

## SUCLG2 Polyclonal Antibody

Catalog number: 14240-1-AP

Size: 35 µg/150 µl

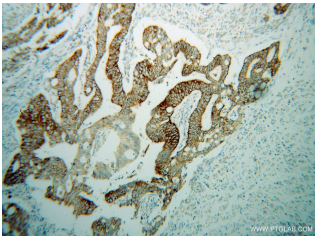
Source: Rabbit

Isotype: IgG

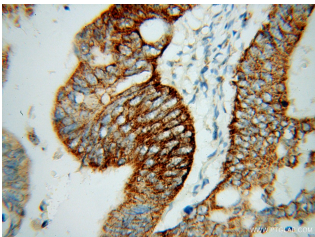
Synonyms:

SUCLG2; G BETA, SCS betaG,

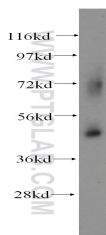
SUCLG2



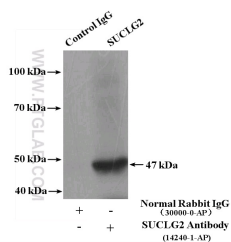
Immunohistochemical of paraffin-embedded human colon cancer using 14240-1-AP(SUCLG2 antibody) at dilution of 1:100 (under 10x lens)



Immunohistochemical of paraffin-embedded human colon cancer using 14240-1-AP(SUCLG2 antibody) at dilution of 1:100 (under 40x lens)



human heart tissue were subjected to SDS PAGE followed by western blot with 14240-1-AP(SUCLG2 antibody) at dilution of 1:500



IP Result of anti-SUCLG2

(IP:14240-1-AP, 4µg;

Detection:14240-1-AP 1:600)

### Applications

Tested applications:	ELISA, WB, IHC, IP
Species specificity:	Human, Mouse, Rat; other species not tested.
Calculated SUCLG2 MW:	47 kDa
Observed SUCLG2 MW:	47 kDa
Positive WB detected in	Human heart tissue, COLO 320 cells, mouse kidney tissue
Positive IP detected in	Mouse kidney tissue
Positive IHC detected in	Human colon cancer tissue, human gliomas tissue
Recommended dilution:	WB: 1:500-1:5000
	IP: 1:200-1:2000
	IHC: 1:20-1:200

Application key: WB = Western blotting, IHC = Immunohistochemistry, IF = Immunofluorescence, IP = Immunoprecipitation

### Immunogen information

Immunogen:	Ag5495
GenBank accession number:	BC047024
Gene ID (NCBI):	8801
Full name:	Succinate-CoA ligase, GDP-forming, beta subunit

### Product information

Purification method:	Antigen affinity purification
Storage:	PBS with 0.02% sodium azide and 50% glycerol pH 7.3. Store at -20°C.

with mouse kidney tissue  
lysate 480ug.