

FKBP8 Polyclonal Antibody

Catalog number: 11173-1-AP

Size: 20 µg/150 µl

Source: Rabbit

Isotype: IgG

Synonyms:

FKBP8; 38 kDa FK506 binding protein, 38 kDa FKBP, FK506

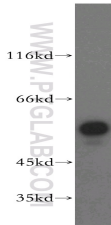
binding protein 8, FK506

binding protein 8, 38kDa, FKBP

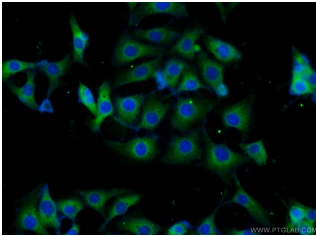
38, FKBP 8, FKBP38, FKBP8,

FKBPr38, hFKBP38, PPIase

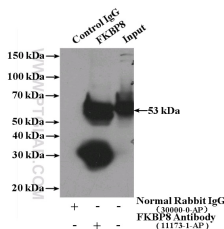
FKBP8, Rotamase



Jurkat cells were subjected to SDS PAGE followed by western blot with 11173-1-AP(FKBP8 antibody) at dilution of 1:500



Immunofluorescent analysis of SH-SY5Y cells using 11173-1-AP(FKBP8 Antibody) at dilution of 1:25 and Alexa Fluor 488-conjugated AffiniPure Goat Anti-Rabbit IgG(H+L)



IP Result of anti-FKBP8 (IP:11173-1-AP, 4µg; Detection:11173-1-AP 1:500) with HeLa cells lysate 3200µg.

Applications

Tested applications:

ELISA, WB, IF, IP

Species specificity:

Human, Mouse; other species not tested.

Calculated FKBP8 MW:

45 kDa

Observed FKBP8 MW:

53 kDa

Positive WB detected in

Jurkat cells, HeLa cells, mouse brain tissue, mouse liver tissue, mouse pancreas tissue, SH-SY5Y cells

Positive IP detected in

HeLa cells

Positive IF detected in

SH-SY5Y cells

Recommended dilution:

WB: 1:200-1:2000

IP: 1:200-1:2000

IF: 1:10-1:100

Application key: WB = Western blotting, IHC = Immunohistochemistry, IF = Immunofluorescence, IP = Immunoprecipitation

Immunogen information

Immunogen:

Ag1649

GenBank accession number:

BC009966

Gene ID (NCBI):

23770

Full name:

FK506 binding protein 8, 38kDa

Product information

Purification method:

Antigen affinity purification

Storage:

PBS with 0.02% sodium azide and 50% glycerol pH 7.3. Store at -20°C.