

HDGF Polyclonal Antibody

Catalog number: 11344-1-AP

Size: 20 µg/150 µl

Source: Rabbit

Isotype: IgG

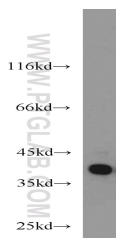
Synonyms:

HDGF; DKFZp686J1764,

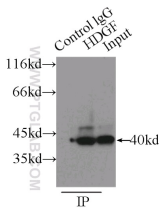
FLJ96580, HDGF, Hepatoma

derived growth factor, HMG

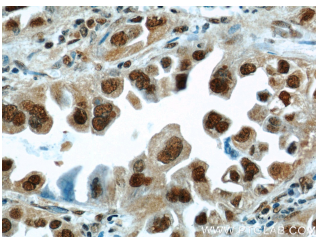
1L2, HMG1L2



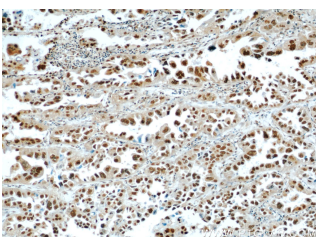
HeLa cells were subjected to SDS PAGE followed by western blot with 11344-1-AP(HDGF antibody) at dilution of 1:2000



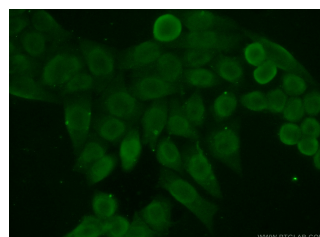
IP Result of anti-HDGF (IP:11344-1-AP, 3µg; Detection:11344-1-AP 1:1000) with HepG2 cells lysate 3000µg.



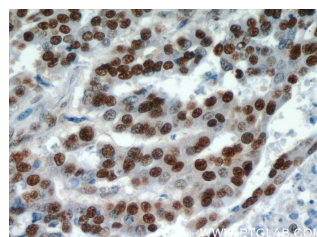
Immunohistochemical of paraffin-embedded human lung cancer using 11344-1-AP(HDGF antibody) at dilution of 1:100 (under 40x lens)



Immunohistochemical of



Immunofluorescent analysis



Immunohistochemical of

Background

HDGF, also named as HMG1L2, belongs to the HDGF family. HDGF is a mitogen for many cell types with nuclear localization necessary for its mitogenic activity. HDGF has also been identified as an important prognostic marker in pathologic cell growth, as it is overexpressed in a number of cancers with expression linked to a poor outcome in lung, esophageal, pancreatic and hepatic cancer. HDGF is highly expressed in human NSCLC tissues, predicting worse prognosis in resected NSCLCs. It might be useful molecular biomarker for predicting the prognosis of resected NSCLCs.

Applications

Tested applications:	ELISA, IP, WB, IHC, IF
Cited applications:	IHC, WB
Species specificity:	Human; other species not tested.
Cited species:	Human
Calculated HDGF MW:	26 kDa
Observed HDGF MW:	40 kDa
Positive WB detected in	HeLa cells, A549 cells, HepG2 cells
Positive IP detected in	HepG2 cells
Positive IHC detected in	Human lung cancer tissue, human colon cancer tissue, human liver cancer tissue, human ovary tumor tissue
Positive IF detected in	HeLa cells
Recommended dilution:	WB: 1:1000-1:10000 IP: 1:500-1:5000 IHC: 1:20-1:200 IF: 1:50-1:500

Application key: WB = Western blotting, IHC = Immunohistochemistry, IF = Immunofluorescence, IP = Immunoprecipitation

Immunogen information

Immunogen:	Ag1893
GenBank accession number:	BC018991
Gene ID (NCBI):	3068
Full name:	Hepatoma-derived growth factor (high-mobility group protein 1-like)

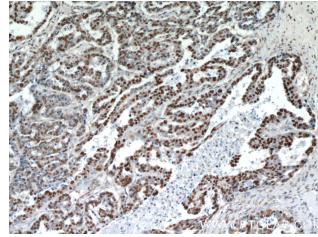
Product information

Purification method:	Antigen affinity purification
Storage:	PBS with 0.1% sodium azide and 50% glycerol pH 7.3. Store at -20°C.

paraffin-embedded human lung cancer using 11344-1-AP(HDGF antibody) at dilution of 1:100 (under 10x lens)

of (10% Formaldehyde) fixed HeLa cells using 11344-1-AP(HDGF Antibody) at dilution of 1:50 and Alexa Fluor 488- conjugated AffiniPure Goat Anti-Rabbit IgG(H+L)

paraffin-embedded human ovary tumor using 11344-1-AP(HDGF antibody) at dilution of 1:100 (under 40x lens)



Immunohistochemical of paraffin-embedded human ovary tumor using 11344-1-AP(HDGF antibody) at dilution of 1:100 (under 10x lens)