

ALDH7A1 Polyclonal Antibody

Catalog number: 10368-1-AP

Size: 22 µg/150 µl

Source: Rabbit

Isotype: IgG

Synonyms:

ALDH7A1; ALDH7A1, Alpha

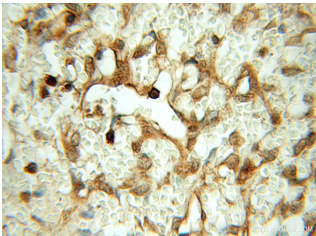
AASA dehydrogenase,

Antiquitin 1, ATQ1, Betaine

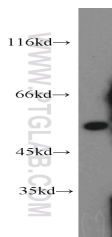
aldehyde dehydrogenase, EPD,

FLJ11738, FLJ92814, P6c

dehydrogenase, PDE



Immunohistochemical of paraffin-embedded human ovary tumor using 10368-1-AP (ALDH7A1 antibody) at dilution of 1:50 (under 40x lens)



mouse liver tissue were subjected to SDS PAGE followed by western blot with 10368-1-AP (ALDH7A1 antibody) at dilution of 1:1000

Background

ALDH7A1 (Alpha-aminoadipic semialdehyde dehydrogenase) is also named as ATQ1 and belongs to the aldehyde dehydrogenase family. It plays a major role in the detoxification of aldehydes generated by alcohol metabolism and lipid peroxidation. This protein has 4 isoforms produced by alternative splicing.

Applications

Tested applications: ELISA, WB, IHC

Cited applications: WB

Species specificity: Human, Mouse, Rat; other species not tested.

Cited species: Mouse, rat

Calculated ALDH7A1 MW: 55 kDa

Observed ALDH7A1 MW: 55kd

Positive WB detected in Mouse liver tissue, HepG2 cells, mouse kidney tissue

Positive IHC detected in Human ovary tumor tissue

Recommended dilution: WB: 1:500-1:5000

IHC: 1:20-1:200

Application key: WB = Western blotting, IHC = Immunohistochemistry, IF = Immunofluorescence, IP = Immunoprecipitation

Immunogen information

Immunogen: Ag0383

GenBank accession number: BC002515

Gene ID (NCBI): 501

Full name: Aldehyde dehydrogenase 7 family, member A1

Product information

Purification method: Antigen affinity purification

Storage: PBS with 0.1% sodium azide and 50% glycerol pH 7.3. Store at -20°C.