

## SH2B1 Polyclonal Antibody

Catalog number: 12226-1-AP

Size: 43 µg/150 µl

Source: Rabbit

Isotype: IgG

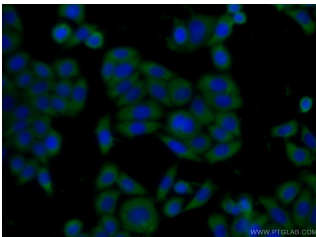
Synonyms:

SH2B1; DKFZp547G1110,

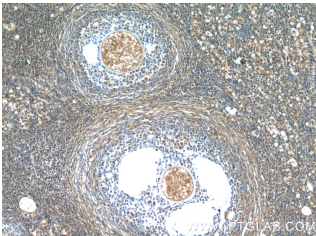
FLJ30542, KIAA1299, PSM,

SH2B, SH2B adapter protein 1,

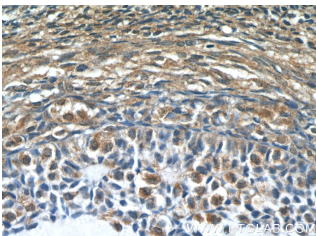
SH2B adaptor protein 1, SH2B1



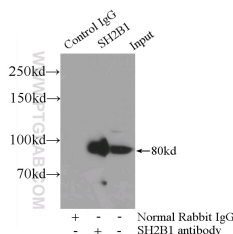
Immunofluorescent analysis of HeLa cells using 12226-1-AP (SH2B1 Antibody) at dilution of 1:50 and Alexa Fluor 488-conjugated AffiniPure Goat Anti-Rabbit IgG(H+L)



Immunohistochemistry of paraffin-embedded human ovary tissue slide using 12226-1-AP (SH2B1 Antibody) at dilution of 1:50 (under 10x lens)



Immunohistochemistry of paraffin-embedded human ovary tissue slide using 12226-1-AP (SH2B1 Antibody) at dilution of 1:50 (under 40x lens)



IP Result of anti-SH2B1

### Background

SH2B1 is a member of the SH2-domain containing mediators family. SH2B1 has been shown to interact with insulin receptor, Grb2, TrkA and Janus kinase 2. Variations close to or in the SH2B1 gene have been found to associate with obesity in two large genome wide association studies of body mass index (PMID: 19079260). SH2B1 deletions are associated with severe early-onset obesity (PMID: 19966786).

### Applications

Tested applications:	ELISA, WB, IP, IHC, IF
Species specificity:	Human; other species not tested.
Calculated SH2B1 MW:	426aa, 45 kDa
Observed SH2B1 MW:	80 kDa
Positive WB detected in:	Transfected HEK-293 cells, HEK-293 cells
Positive IP detected in:	HEK-293 cells
Positive IHC detected in:	Human ovary tissue, human skeletal muscle tissue
Positive IF detected in:	HeLa cells
Recommended dilution:	WB: 1:200-1:2000 IP: 1:200-1:2000 IHC: 1:20-1:200 IF: 1:20-1:200

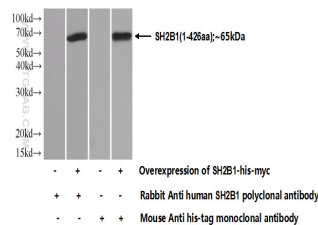
Application key: WB = Western blotting, IHC = Immunohistochemistry, IF = Immunofluorescence, IP = Immunoprecipitation

### Immunogen information

Immunogen:	Ag2863
GenBank accession number:	BC010704
Gene ID (NCBI):	25970
Full name:	SH2B adaptor protein 1

### Product information

Purification method:	Antigen affinity purification
Storage:	PBS with 0.1% sodium azide and 50% glycerol pH 7.3. Store at -20°C.



Transfected HEK-293 cells

(IP:12226-1-AP, 4ug;  
Detection:12226-1-AP 1:600)  
with HEK-293 cells lysate  
3000ug.

were subjected to SDS PAGE  
followed by western blot with  
12226-1-AP( SH2B1 Antibody)  
at dilution of 1:700