

OLFM3 Polyclonal Antibody

Catalog number: 12596-1-AP

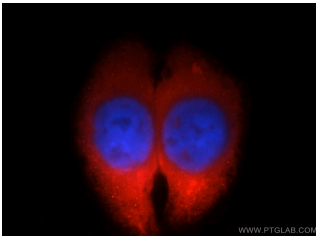
Size: 20 µg/150 µl

Source: Rabbit

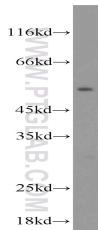
Isotype: IgG

Synonyms:

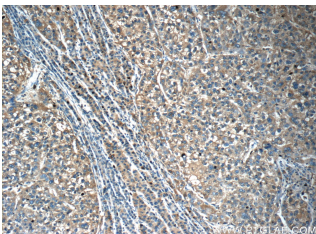
OLFM3; NOE3, Noelin 3,
NOELIN3, NOELIN3_V1,
NOELIN3_V2, NOELIN3_V3,
NOELIN3_V4, NOELIN3_V5,
NOELIN3_V6, olfactomedin 3,
OLFM3, OPTIMEDIN



Immunofluorescent analysis of HepG2 cells, using OLFM3 antibody 12596-1-AP at 1:25 dilution and Rhodamine-labeled goat anti-rabbit IgG (red). Blue pseudocolor = DAPI (fluorescent DNA dye).



mouse liver tissue were subjected to SDS PAGE followed by western blot with 12596-1-AP(OLFM3 antibody) at dilution of 1:500



Immunohistochemistry of paraffin-embedded human liver cancer tissue slide using 12596-1-AP(OLFM3 Antibody) at dilution of 1:50 (under 10x lens)

Applications

Tested applications:	ELISA, WB, IF, IHC
Species specificity:	Human, Mouse; other species not tested.
Calculated OLFM3 MW:	458aa,53 kDa
Observed OLFM3 MW:	50-55 kDa
Positive WB detected in	Mouse liver tissue, A2780 cells, human liver tissue, NIH/3T3 cells, PC-3 cells
Positive IHC detected in	Human liver cancer tissue
Positive IF detected in	HepG2 cells
Recommended dilution:	WB: 1:200-1:2000 IHC: 1:20-1:200 IF: 1:10-1:100

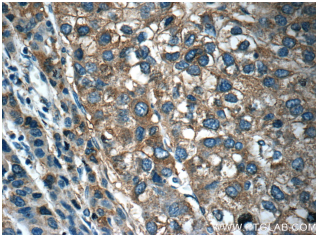
Application key: WB = Western blotting, IHC = Immunohistochemistry, IF = Immunofluorescence, IP = Immunoprecipitation

Immunogen information

Immunogen:	Ag3207
GenBank accession number:	BC022531
Gene ID (NCBI):	118427
Full name:	Olfactomedin 3

Product information

Purification method:	Antigen affinity purification
Storage:	PBS with 0.02% sodium azide and 50% glycerol pH 7.3. Store at -20°C.



**Immunohistochemistry of
paraffin-embedded human
liver cancer tissue slide using
12596-1-AP (OLFM3
Antibody) at dilution of 1:50
(under 40x lens)**