

## HOMER2 Polyclonal Antibody

Catalog number: 11143-1-AP

Size: 45 µg/150 µl

Source: Rabbit

Isotype: IgG

Synonyms:

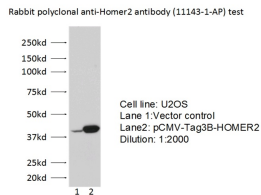
HOMER2; ACPD, CPD, Cupidin,

HOMER 2, homer homolog 2

(Drosophila), Homer protein

homolog 2, HOMER2,

HOMER2A, HOMER2B, Vesl 2



WB result of anti-HOMER2 (11143-1-AP 1:2000) with transfected U2OS cell by Dr. Yupeng Chen.

### Applications

Tested applications:	ELISA, WB
Species specificity:	Human; other species not tested.
Calculated HOMER2 MW:	41 kDa
Observed HOMER2 MW:	39 kDa
Positive WB detected in	U2OS cells
Recommended dilution:	WB: 1:1000-1:10000

Application key: WB = Western blotting, IHC = Immunohistochemistry, IF = Immunofluorescence, IP = Immunoprecipitation

### Immunogen information

Immunogen:	Ag1606
GenBank accession number:	BC012109
Gene ID (NCBI):	9455
Full name:	Homer homolog 2 (Drosophila)

### Product information

Purification method:	Antigen affinity purification
Storage:	PBS with 0.1% sodium azide and 50% glycerol pH 7.3. Store at -20°C.