

## Calbindin Polyclonal Antibody

Catalog number: 14479-1-AP

Size: 43 µg/150 µl

Source: Rabbit

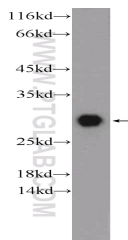
Isotype: IgG

Synonyms:

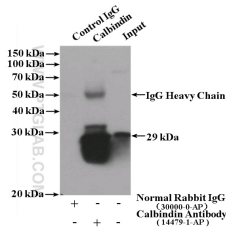
CALB1; CAB27, CALB, CALB1,

Calbindin, calbindin 1, 28kDa,

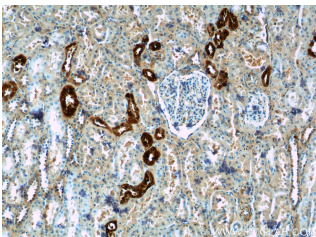
Calbindin D28, D 28K



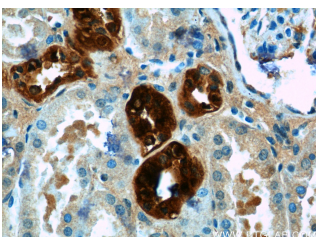
mouse brain tissue were subjected to SDS PAGE followed by western blot with 14479-1-AP( Calbindin Antibody) at dilution of 1:1000



IP Result of anti-Calbindin (IP:14479-1-AP, 4µg; Detection:14479-1-AP 1:1000) with mouse brain tissue lysate 4000µg.



Immunohistochemistry of paraffin-embedded human kidney tissue slide using 14479-1-AP( Calbindin Antibody) at dilution of 1:50 (under 10x lens)



Immunohistochemistry of paraffin-embedded human

### Applications

Tested applications:	ELISA, IP, IHC, WB
Species specificity:	Human, Mouse, Rat; other species not tested.
Calculated Calbindin MW:	30 kDa
Observed Calbindin MW:	29 kDa
Positive WB detected in	Mouse brain tissue, human brain tissue, human kidney tissue, rat brain tissue
Positive IP detected in	Mouse brain tissue
Positive IHC detected in	Human kidney tissue, human small intestine tissue
Recommended dilution:	WB: 1:500-1:5000 IP: 1:500-1:5000 IHC: 1:50-1:500

Application key: WB = Western blotting, IHC = Immunohistochemistry, IF = Immunofluorescence, IP = Immunoprecipitation

### Immunogen information

Immunogen:	Ag5861
GenBank accession number:	BC006478
Gene ID (NCBI):	793
Full name:	Calbindin 1, 28kDa

### Product information

Purification method:	Antigen affinity purification
Storage:	PBS with 0.02% sodium azide and 50% glycerol pH 7.3. Store at -20°C.

kidney tissue slide using  
14479-1-AP( Calbindin  
Antibody) at dilution of 1:50  
(under 40x lens)