

BPI Polyclonal Antibody

Catalog number: 14368-1-AP

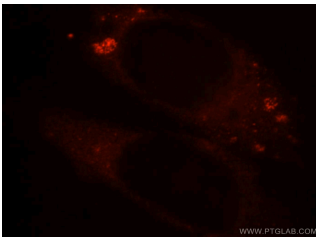
Size: 24 µg/150 µl

Source: Rabbit

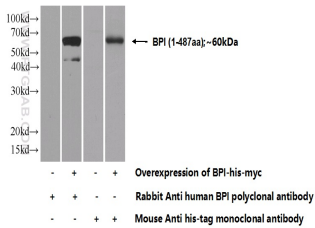
Isotype: IgG

Synonyms:

BPI; BPI, CAP 57



Immunofluorescent analysis of HepG2 cells, using BPI antibody 14368-1-AP at 1:25 dilution and Rhodamine-labeled goat anti-rabbit IgG (red).



Transfected HEK-293 cells were subjected to SDS PAGE followed by western blot with 14368-1-AP(BPI Antibody) at dilution of 1:1000

Applications

Tested applications:	ELISA, IF, WB
Species specificity:	Human; other species not tested.
Calculated BPI MW:	54 kDa
Observed BPI MW:	
Positive WB detected in	Transfected HEK-293 cells
Positive IF detected in	HepG2 cells
Recommended dilution:	WB: 1:500-1:5000 IF: 1:10-1:100

Application key: WB = Western blotting, IHC = Immunohistochemistry, IF = Immunofluorescence, IP = Immunoprecipitation

Immunogen information

Immunogen:	Ag5695
GenBank accession number:	BC040955
Gene ID (NCBI):	671
Full name:	Bactericidal/permeability-increasing protein

Product information

Purification method:	Antigen affinity purification
Storage:	PBS with 0.1% sodium azide and 50% glycerol pH 7.3. Store at -20°C.