

## XPR1 Polyclonal Antibody

Catalog number: 14174-1-AP

Size: 22 µg/150 µl

Source: Rabbit

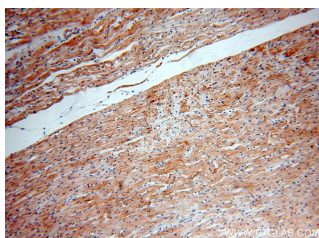
Isotype: IgG

Synonyms:

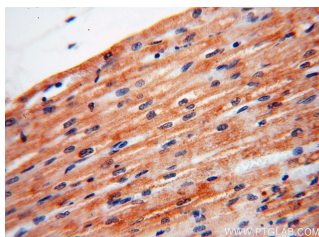
XPR1; FLJ90308, Protein SYG1

homolog, SYG1, X receptor, X3,

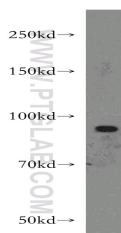
XPR1, XR



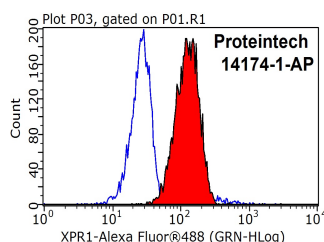
Immunohistochemical of paraffin-embedded human heart using 14174-1-AP(XPR1 antibody) at dilution of 1:100 (under 10x lens)



Immunohistochemical of paraffin-embedded human heart using 14174-1-AP(XPR1 antibody) at dilution of 1:100 (under 40x lens)



Jurkat cells were subjected to SDS PAGE followed by western blot with 14174-1-AP(XPR1 antibody) at dilution of 1:500



1X10<sup>6</sup> Jurkat cells were stained with 0.2ug XPR1

### Background

XPR1 is a receptor for xenotropic and polytropic murine leukemia retroviruses and homolog of yeast Syg1 and plant Pi transporter PHO1 (PMID: 20633538). XPR1 has been identified as an atypical G-protein-coupled receptor. Xenotropic or polytropic retrovirus binding to XPR1 can disrupt the cAMP-mediated signaling function of Xpr1, leading to the apoptosis of infected cells (PMID: 22090134).

### Applications

Tested applications:	ELISA, WB, IHC, FC
Species specificity:	Human, Mouse, Rat; other species not tested.
Calculated XPR1 MW:	696aa, 82 kDa
Observed XPR1 MW:	82-84kd
Positive WB detected in	Jurkat cells
Positive IHC detected in	Human heart tissue
Positive FC detected in	Jurkat cells
Recommended dilution:	WB: 1:500-1:5000 IHC: 1:20-1:200 FC: N/A

Application key: WB = Western blotting, IHC = Immunohistochemistry, IF = Immunofluorescence, IP = Immunoprecipitation

### Immunogen information

Immunogen:	Ag5373
GenBank accession number:	BC041142
Gene ID (NCBI):	9213
Full name:	Xenotropic and polytropic retrovirus receptor

### Product information

Purification method:	Antigen affinity purification
Storage:	PBS with 0.02% sodium azide and 50% glycerol pH 7.3. Store at -20°C.

antibody (14174-1-AP, red)  
and control antibody (blue).  
Fixed with 90% MeOH  
blocked with 3% BSA (30  
min). Alexa Fluor 488-  
conjugated AffiniPure Goat  
Anti-Rabbit IgG(H+L) with  
dilution 1:1000.