

OPTN Polyclonal Antibody

Catalog number: 10837-1-AP

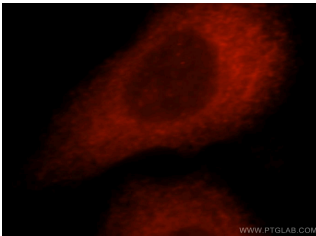
Size: 52 µg/150 µl

Source: Rabbit

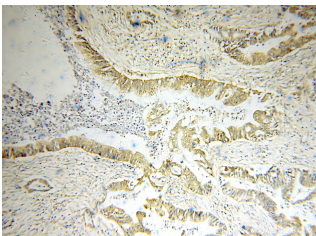
Isotype: IgG

Synonyms:

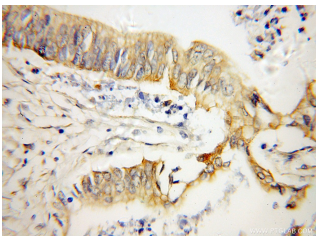
OPTN; E3 14.7K interacting protein, FIP 2, FIP2, GLC1E, HIP 7, HIP7, Huntingtin yeast partner L, HYPL, NEMO related protein, NRP, optineurin, OPTN, TFIIIA INTP



Immunofluorescent analysis of MCF-7 cells, using OPTN antibody 10837-1-AP at 1:25 dilution and Rhodamine-labeled goat anti-rabbit IgG (red).



Immunohistochemical of paraffin-embedded human pancreas cancer using 10837-1-AP(OPTN antibody) at dilution of 1:50 (under 10x lens)



Immunohistochemical of paraffin-embedded human pancreas cancer using 10837-1-AP(OPTN antibody) at dilution of 1:50 (under 40x lens)

Background

OPTN, also named as FIP2, GLC1E, HIP7, HYPL and NRP, plays a neuroprotective role in the eye and optic nerve. It is probably part of the TNF-alpha signaling pathway that can shift the equilibrium toward induction of cell death. OPTN may act by regulating membrane trafficking and cellular morphogenesis via a complex that contains Rab8 and huntingtin (HD). OPTN may constitute a cellular target for adenovirus E3 14.7, an inhibitor of TNF-alpha functions, thereby affecting cell death. Defects in OPTN are the cause of primary open angle glaucoma type 1E (GLC1E). Defects in OPTN are a cause of susceptibility to normal pressure glaucoma (NPG). OPTN mutated in adult-onset primary open angle glaucoma. It supports the protective role of OPTN in the trabecular meshwork.

Applications

Tested applications:	ELISA, WB, IHC, IF, IP, FC
Cited applications:	IHC, WB
Species specificity:	Human, Mouse, Rat; other species not tested.
Cited species:	Human, mouse
Calculated OPTN MW:	66 kDa
Observed OPTN MW:	66 kDa
Positive WB detected in	HeLa cells, mouse brain tissue, mouse testis tissue
Positive IP detected in	Mouse brain tissue
Positive IHC detected in	Human pancreas cancer tissue, human brain tissue
Positive IF detected in	MCF-7 cells
Positive FC detected in	MCF-7 cells
Recommended dilution:	WB: 1:500-1:5000 IP: 1:200-1:2000 IHC: 1:20-1:200 IF: 1:10-1:100 FC: N/A

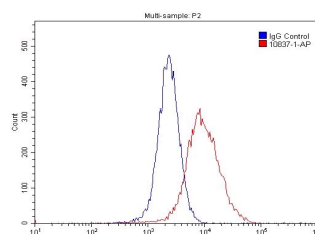
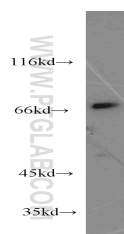
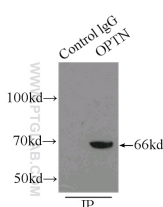
Application key: WB = Western blotting, IHC = Immunohistochemistry, IF = Immunofluorescence, IP = Immunoprecipitation

Immunogen information

Immunogen:	Ag1272
GenBank accession number:	BC013876
Gene ID (NCBI):	10133
Full name:	Optineurin

Product information

Purification method:	Antigen affinity purification
Storage:	PBS with 0.1% sodium azide and 50% glycerol pH 7.3. Store at -20°C.



IP Result of anti-OPTN
(IP:10837-1-AP, 3ug;
Detection:10837-1-AP 1:800)
with mouse brain tissue lysate
8000ug.

HeLa cells were subjected to
SDS PAGE followed by
western blot with 10837-1-
AP(OPTN antibody) at
dilution of 1:800

1×10^6 MCF-7 cells were
stained with 0.2ug OPTN
antibody (10837-1-AP, red)
and control antibody (blue).
Fixed with 4% PFA blocked
with 3% BSA (30 min). Alexa
Fluor 488-conjugated
AffiniPure Goat Anti-Rabbit
IgG(H+L) with dilution 1:1500.