

NDUFS6 Polyclonal Antibody

Catalog number: 14417-1-AP

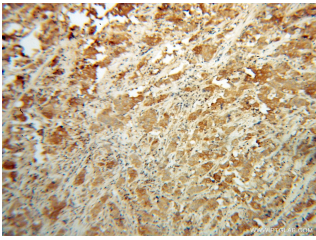
Size: 24 µg/150 µl

Source: Rabbit

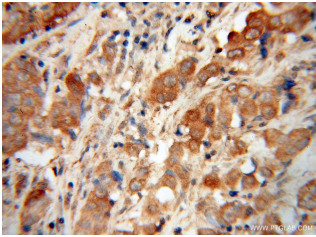
Isotype: IgG

Synonyms:

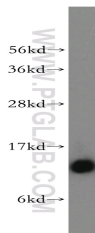
NDUFS6; CI 13kD A, Complex I
13kD A, NDUFS6



Immunohistochemical of paraffin-embedded human prostate cancer using 14417-1-AP (NDUFS6 antibody) at dilution of 1:100 (under 10x lens)



Immunohistochemical of paraffin-embedded human prostate cancer using 14417-1-AP (NDUFS6 antibody) at dilution of 1:100 (under 40x lens)



human heart tissue were subjected to SDS PAGE followed by western blot with 14417-1-AP (NDUFS6 antibody) at dilution of 1:500

Background

NDUFS6 (NADH dehydrogenase [ubiquinone] iron-sulfur protein 6, mitochondrial) is also named as CI-13kD-A, NADH-ubiquinone oxidoreductase 13 kDa-A subunit and belongs to the complex I NDUFS6 subunit family. It is an accessory subunit of the mitochondrial membrane respiratory chain NADH dehydrogenase (Complex I), that is believed not to be involved in catalysis.

Applications

Tested applications:	ELISA, WB, IHC
Cited applications:	WB
Species specificity:	Human, Mouse, Rat; other species not tested.
Cited species:	Human
Calculated NDUFS6 MW:	14 kDa
Observed NDUFS6 MW:	13 kDa
Positive WB detected in	Human heart tissue, human liver tissue, rat liver tissue
Positive IHC detected in	Human prostate cancer tissue
Recommended dilution:	WB: 1:500-1:5000 IHC: 1:20-1:200

Application key: WB = Western blotting, IHC = Immunohistochemistry, IF = Immunofluorescence, IP = Immunoprecipitation

Immunogen information

Immunogen:	Ag5762
GenBank accession number:	BC046155
Gene ID (NCBI):	4726
Full name:	NADH dehydrogenase (ubiquinone) Fe-S protein 6, 13kDa (NADH-coenzyme Q reductase)

Product information

Purification method:	Antigen affinity purification
Storage:	PBS with 0.02% sodium azide and 50% glycerol pH 7.3. Store at -20°C.