

GCET2 Polyclonal Antibody

Catalog number: 13447-1-AP

Size: 54 µg/150 µl

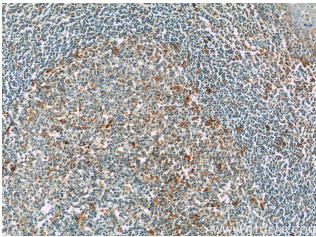
Source: Rabbit

Isotype: IgG

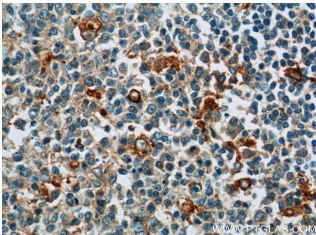
Synonyms:

GCET2; GAL, GCAT2, GCET2,

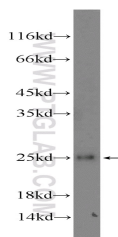
HGAL



Immunohistochemistry of paraffin-embedded human tonsillitis tissue slide using 13447-1-AP(GCET2 Antibody) at dilution of 1:50 (under 10x lens)



Immunohistochemistry of paraffin-embedded human tonsillitis tissue slide using 13447-1-AP(GCET2 Antibody) at dilution of 1:50 (under 40x lens)



Raji cells were subjected to SDS PAGE followed by western blot with 13447-1-AP(GCET2 Antibody) at dilution of 1:300

Background

GCET2, also named HGAL, is a newly gene that has been shown to be a useful marker for germinal centre (GC) B cells and GC B-cell derived malignancies, including follicular lymphomas and germinal centre B cell-like diffuse large B-cell lymphomas (GCB-DLBCLs), and is a useful prognosticator for DLBCLs. GCET2 may be an adaptor protein in GC B cells that transduces signals from GC B-cell membrane to the cytosol via its association with GRB2.

Applications

Tested applications:	ELISA, WB, IHC
Species specificity:	Human; other species not tested.
Calculated GCET2 MW:	178aa,21 kDa
Observed GCET2 MW:	25 kDa
Positive WB detected in	Raji cells
Positive IHC detected in	Human tonsillitis tissue, human lymphoma tissue
Recommended dilution:	WB: 1:200-1:1000 IHC: 1:20-1:200

Application key: WB = Western blotting, IHC = Immunohistochemistry, IF = Immunofluorescence, IP = Immunoprecipitation

Immunogen information

Immunogen:	Ag4280
GenBank accession number:	BC030506
Gene ID (NCBI):	257144
Full name:	Germinal center expressed transcript 2

Product information

Purification method:	Antigen affinity purification
Storage:	PBS with 0.1% sodium azide and 50% glycerol pH 7.3. Store at -20°C.