

## UCP2 Polyclonal Antibody

Catalog number: 11081-1-AP

Size: 30 µg/150 µl

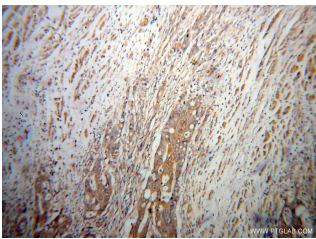
Source: Rabbit

Isotype: IgG

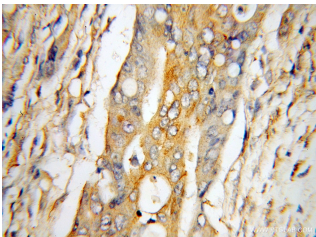
Synonyms:

UCP2; BMIQ4, SLC25A8, UCP 2,

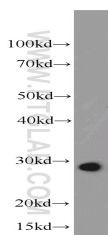
UCP2, UCPH



Immunohistochemical of paraffin-embedded human colon cancer using 11081-1-AP(UCP2 antibody) at dilution of 1:50 (under 10x lens)



Immunohistochemical of paraffin-embedded human colon cancer using 11081-1-AP(UCP2 antibody) at dilution of 1:50 (under 40x lens)



mouse skeletal muscle tissue were subjected to SDS PAGE followed by western blot with 11081-1-AP(UCP2 antibody) at dilution of 1:1000

### Background

UCP2 (uncoupling protein 2) is a member of the mitochondrial carrier protein super family located in the mitochondrial inner membrane. The UCPs differ greatly in tissue distribution: UCP1 is expressed only in brown adipose; UCP3 preferentially in skeletal muscle, brown adipose and heart; UCP4 and UCP5 mainly in the nervous system (18167556). In contrast, UCP2 has a broad distribution and is implicated in a wide range of pathophysiological processes, including diabetes and cancer. This antibody detect a band around 28-33 kDa corresponding to UCP2 protein in mouse liver, skeletal muscle and pancreas. Some upper and lower bands also were observed due to the dimer formation and degradation of the UCP2 protein (20103532). This antibody was raised against the full-length UCP2 protein and may cross-react with UCP3. It is notable that UCP2 is known to have a very short half-life less than 1 hour (17240372). It is strongly recommended that fresh-made lysate be used for western blot assays.

### Applications

Tested applications:	ELISA, WB, IHC
Cited applications:	IF, IHC, WB
Species specificity:	Human, Mouse, Rat; other species not tested.
Cited species:	Human, mouse, rat
Calculated UCP2 MW:	33 kDa
Observed UCP2 MW:	28-30 kDa
Positive WB detected in	Mouse skeletal muscle tissue, human skeletal muscle tissue, Jurkat cells, mouse spleen tissue, rat skeletal muscle tissue
Positive IHC detected in	Human colon cancer tissue, human hepatocirrhosis tissue, human liver tissue, human ovary tissue, human skeletal muscle tissue
Recommended dilution:	WB: 1:500-1:5000 IHC: 1:20-1:200

Application key: WB = Western blotting, IHC = Immunohistochemistry, IF = Immunofluorescence, IP = Immunoprecipitation

### Immunogen information

Immunogen:	Ag1551
GenBank accession number:	BC011737
Gene ID (NCBI):	7351
Full name:	Uncoupling protein 2 (mitochondrial, proton carrier)

### Product information

Purification method:	Antigen affinity purification
Storage:	PBS with 0.1% sodium azide and 50% glycerol pH 7.3. Store at -20°C.