

CREM Polyclonal Antibody

Catalog number: 12131-1-AP

Size: 36 µg/150 µl

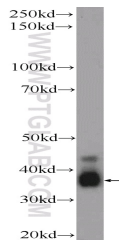
Source: Rabbit

Isotype: IgG

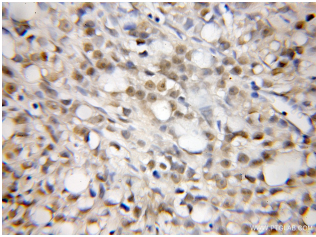
Synonyms:

CREM; CREM, hCREM 2, ICER,

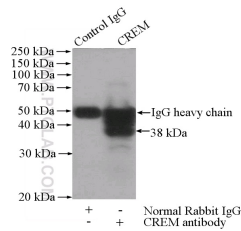
Inducible cAMP early repressor



rat testis tissue were subjected to SDS PAGE followed by western blot with 12131-1-AP(CREM Antibody) at dilution of 1:300



Immunohistochemical of paraffin-embedded human prostate cancer using 12131-1-AP(CREM antibody) at dilution of 1:50 (under 10x lens)



IP Result of anti-CREM (IP:12131-1-AP, 4ug; Detection:12131-1-AP 1:300) with mouse testis tissue lysate 1800ug.

Applications

Tested applications:	ELISA, IHC, WB, IP
Species specificity:	Human, Mouse, Rat; other species not tested.
Calculated CREM MW:	332aa, 36 kDa
Observed CREM MW:	38 kDa
Positive WB detected in:	Rat testis tissue
Positive IP detected in:	Mouse testis tissue
Positive IHC detected in:	Human prostate cancer tissue
Recommended dilution:	WB: 1:200-1:1000
	IP: 1:200-1:1000
	IHC: 1:20-1:200

Application key: WB = Western blotting, IHC = Immunohistochemistry, IF = Immunofluorescence, IP = Immunoprecipitation

Immunogen information

Immunogen:	Ag2775
GenBank accession number:	BC017117
Gene ID (NCBI):	1390
Full name:	CAMP responsive element modulator

Product information

Purification method:	Antigen affinity purification
Storage:	PBS with 0.02% sodium azide and 50% glycerol pH 7.3. Store at -20°C.