

## SMNDC1 Polyclonal Antibody

Catalog number: 12178-1-AP

Size: 20 µg/150 µl

Source: Rabbit

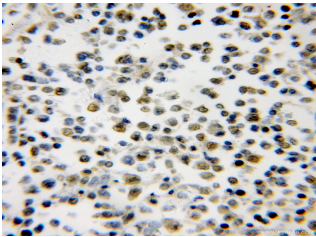
Isotype: IgG

Synonyms:

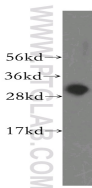
SMNDC1; 30 kDa splicing factor

SMNrp, SMN related protein,

SMNDC1, SMNR, SPF30



Immunohistochemical of paraffin-embedded human lymphoma using 12178-1-AP(SMNDC1 antibody) at dilution of 1:50 (under 10x lens)



human lung tissue were subjected to SDS PAGE followed by western blot with 12178-1-AP(SMNDC1 antibody) at dilution of 1:400

### Applications

Tested applications:	ELISA, WB, IHC
Species specificity:	Human, Mouse, Rat; other species not tested.
Calculated SMNDC1 MW:	238aa, 27 kDa
Observed SMNDC1 MW:	30 kDa
Positive WB detected in	Human lung tissue, human heart tissue, human liver tissue, mouse skeletal muscle tissue
Positive IHC detected in	Human lymphoma tissue
Recommended dilution:	WB: 1:500-1:5000 IHC: 1:20-1:200

Application key: WB = Western blotting, IHC = Immunohistochemistry, IF = Immunofluorescence, IP = Immunoprecipitation

### Immunogen information

Immunogen:	Ag2822
GenBank accession number:	BC011234
Gene ID (NCBI):	10285
Full name:	Survival motor neuron domain containing 1

### Product information

Purification method:	Antigen affinity purification
Storage:	PBS with 0.1% sodium azide and 50% glycerol pH 7.3. Store at -20°C.