

SEPT6 Polyclonal Antibody

Catalog number: 12805-1-AP

Size: 31 µg/150 µl

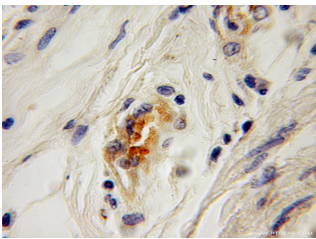
Source: Rabbit

Isotype: IgG

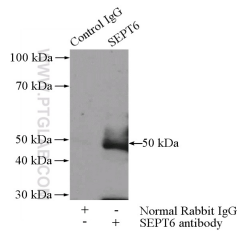
Synonyms:

SEPT6; KIAA0128, SEP2,

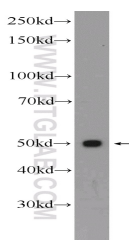
SEPT2, SEPT6, septin 6



Immunohistochemical of paraffin-embedded human cervical cancer using 12805-1-AP (SEPT6 antibody) at dilution of 1:100 (under 10x lens)



IP Result of anti-SEPT6 (IP:12805-1-AP, 4µg; Detection:12805-1-AP 1:600) with rat brain tissue lysate 4000µg.



Jurkat cells were subjected to SDS PAGE followed by western blot with 12805-1-AP (SEPT6 Antibody) at dilution of 1:600

Background

SEPT6 belongs to the septins family that are conserved GTP-binding proteins functioning as dynamic, regulatable scaffolds for the recruitment of other proteins. They are involved in membrane dynamics, vesicle trafficking, apoptosis, and cytoskeletal remodeling. SEPT6 also interacts with hepatitis C virus (HCV) NS5b RNA polymerase and NS5b-binding protein (HNRNPA1) and may play a role in HCV RNA replication.

Applications

Tested applications:	ELISA, IHC, WB, IP
Cited applications:	WB
Species specificity:	Human, Mouse, Rat; other species not tested.
Cited species:	Human, mouse
Calculated SEPT6 MW:	434aa, 50 kDa
Observed SEPT6 MW:	50 kDa
Positive WB detected in	Jurkat cells, K-562 cells, rat brain tissue
Positive IP detected in	Rat brain tissue
Positive IHC detected in	Human cervical cancer tissue
Recommended dilution:	WB: 1:200-1:2000
	IP: 1:200-1:2000
	IHC: 1:20-1:200

Application key: WB = Western blotting, IHC = Immunohistochemistry, IF = Immunofluorescence, IP = Immunoprecipitation

Immunogen information

Immunogen:	Ag3521
GenBank accession number:	BC036240
Gene ID (NCBI):	23157
Full name:	Septin 6

Product information

Purification method:	Antigen affinity purification
Storage:	PBS with 0.1% sodium azide and 50% glycerol pH 7.3. Store at -20°C.