

## PRC1 Polyclonal Antibody

Catalog number: 10110-2-AP

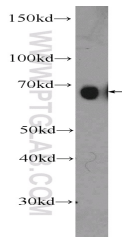
Size: 45 µg/150 µl

Source: Rabbit

Isotype: IgG

Synonyms:

PRC1; ASE1, PRC1



HEK-293T cells were subjected to SDS PAGE followed by western blot with 10110-2-AP( PRC1 Antibody) at dilution of 1:600

### Background

PRC1 is involved in cytokinesis. PRC1 is at high level during S and G2/M and drop dramatically after cell exit mitosis and enter G1. PRC1 is located in the nucleus during interphase, and becomes associated with mitotic spindles in a highly dynamic manner during mitosis, and localizes to the cell mid-body during cytokinesis. PRC1 is a good substrate for several cyclin-dependent kinases (CDKs) in vitro and is phosphorylated in vivo at sites that are phosphorylated by CDK in vitro, suggesting that PRC1 is an in vivo CDK substrate.

### Applications

Tested applications:	ELISA, WB
Species specificity:	Human,Mouse,Rat; other species not tested.
Calculated PRC1 MW:	67 kDa
Observed PRC1 MW:	67 kDa
Positive WB detected in	HEK-293T cells, HeLa cells, HepG2 cells, MCF-7 cells
Recommended dilution:	WB: 1:200-1:2000

Application key: WB = Western blotting, IHC = Immunohistochemistry, IF = Immunofluorescence, IP = Immunoprecipitation

### Immunogen information

Immunogen:	Ag0163
GenBank accession number:	BC005140
Gene ID (NCBI):	9055
Full name:	Protein regulator of cytokinesis 1

### Product information

Purification method:	Antigen affinity purification
Storage:	PBS with 0.1% sodium azide and 50% glycerol pH 7.3. Store at -20°C.