

NME1 Polyclonal Antibody

Catalog number: 11086-2-AP

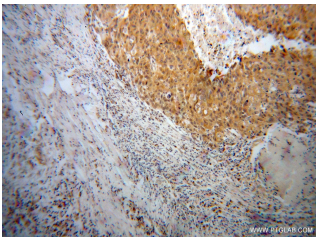
Size: 52 µg/150 µl

Source: Rabbit

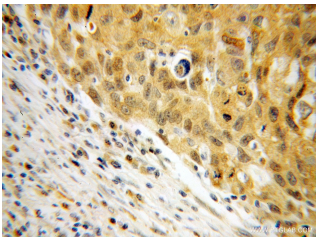
Isotype: IgG

Synonyms:

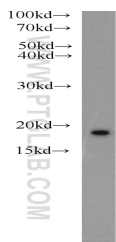
NME1; AWD, GAAD, Granzyme A activated DNase, NB, NBS, NDK A, NDP kinase A, NDPK A, NDPKA, NME1



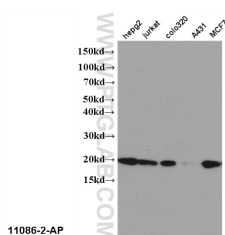
Immunohistochemical of paraffin-embedded human lung cancer using 11086-2-AP(NME1 antibody) at dilution of 1:100 (under 10x lens)



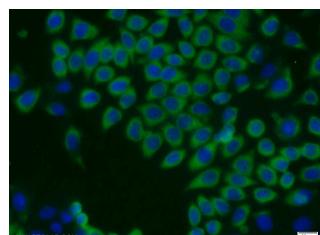
Immunohistochemical of paraffin-embedded human lung cancer using 11086-2-AP(NME1 antibody) at dilution of 1:100 (under 40x lens)



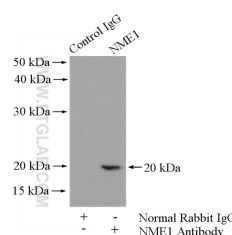
HeLa cells were subjected to SDS PAGE followed by western blot with 11086-2-AP(NME1 antibody) at dilution of 1:1500



WB result of 11086-2-



Immunofluorescent analysis



IP Result of anti-NME1

Background

NME1 is also named as NDPKA(Nucleoside diphosphate kinase A), NM23(Metastasis inhibition factor nm23),GAAD(Granzyme A-activated DNase) and belongs to the NDK family.It is a major role in the synthesis of nucleoside triphosphates other than ATP and required for neural development including neural patterning and cell fate determination.It has 3 isoforms produced by alternative splicing.

Applications

Tested applications:	ELISA, WB, IHC, IF, IP
Species specificity:	Human,Mouse,Rat; other species not tested.
Calculated NME1 MW:	17 kDa
Observed NME1 MW:	16-20 kDa
Positive WB detected in	HeLa cells, A549 cells, MCF7 cells
Positive IP detected in	A549 cells
Positive IHC detected in	Human lung cancer tissue, human pancreas cancer tissue
Positive IF detected in	MCF-7 cells
Recommended dilution:	WB: 1:500-1:5000 IP: 1:200-1:2000 IHC: 1:20-1:200 IF: 1:20-1:200

Application key: WB = Western blotting, IHC = Immunohistochemistry, IF = Immunofluorescence, IP = Immunoprecipitation

Immunogen information

Immunogen:	Ag1548
GenBank accession number:	BC018994
Gene ID (NCBI):	4830
Full name:	Non-metastatic cells 1, protein (NM23A) expressed in

Product information

Purification method:	Antigen affinity purification
Storage:	PBS with 0.1% sodium azide and 50% glycerol pH 7.3. Store at -20°C.

AP(NME1 antibody).

**of MCF-7 cells using 11086-2-
AP (NME1 Antibody) at
dilution of 1:50 and Alexa
Fluor 488-conjugated
AffiniPure Goat Anti-Rabbit
IgG(H+L)**

**(IP:11086-2-AP, 4ug;
Detection:11086-2-AP 1:500)
with A549 cells lysate 2800ug.**