

CDC23 Polyclonal Antibody

Catalog number: 10683-1-AP

Size: 37 µg/150 µl

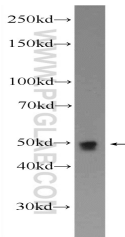
Source: Rabbit

Isotype: IgG

Synonyms:

CDC23; ANAPC8, APC8, CDC23,

Cyclosome subunit 8



K-562 cells were subjected to SDS PAGE followed by western blot with 10683-1-AP(CDC23 Antibody) at dilution of 1:600

Background

CDC23(cell division cycle protein 23 homolog) is also named as ANAPC8 and belongs to the APC8/CDC23 family. It is a subunit of the anaphase-promoting complex (APC), which functions at the metaphase-to-anaphase transition of the cell cycle and is regulated by spindle checkpoint proteins. It can be phosphorylated and the phosphorylation on Thr-562 occurs specifically during mitosis(PMID:19690332). It has 3 isoforms produced by alternative splicing with the molecular weight of 69 kDa, 17 kDa and 56 kDa.

Applications

Tested applications:	ELISA, WB
Species specificity:	Human,Mouse,Rat; other species not tested.
Calculated CDC23 MW:	68kd
Observed CDC23 MW:	49 kDa
Positive WB detected in	K-562 cells, HeLa cells
Recommended dilution:	WB: 1:200-1:2000

Application key: WB = Western blotting, IHC = Immunohistochemistry, IF = Immunofluorescence, IP = Immunoprecipitation

Immunogen information

Immunogen:	Ag1068
GenBank accession number:	BC005258
Gene ID (NCBI):	8697
Full name:	Cell division cycle 23 homolog (S. cerevisiae)

Product information

Purification method:	Antigen affinity purification
Storage:	PBS with 0.1% sodium azide and 50% glycerol pH 7.3. Store at -20°C.