

Protein C inhibitor Polyclonal Antibody

Catalog number: 10673-1-AP

Size: 20 µg/150 µl

Source: Rabbit

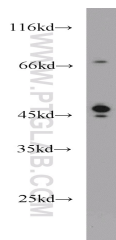
Isotype: IgG

Synonyms:

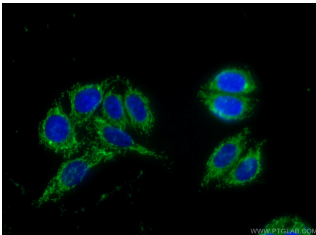
SERPINA5; PAI3, PCI, PLANH3,

PROCI, Protein C inhibitor,

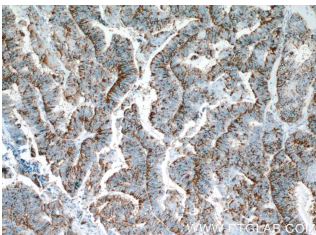
SERPINA5



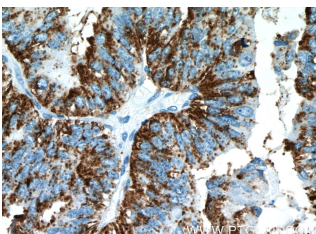
HepG2 cells were subjected to SDS PAGE followed by western blot with 10673-1-AP(SERPINA5 antibody) at dilution of 1:1000



Immunofluorescent analysis of (10% Formaldehyde) fixed HepG2 cells using 10673-1-AP(SERPINA5 Antibody) at dilution of 1:50 and Alexa Fluor 488-conjugated AffiniPure Goat Anti-Rabbit IgG(H+L)



Immunohistochemistry of paraffin-embedded human ovary tumor tissue slide using 10673-1-AP(SERPINA5 Antibody) at dilution of 1:50 (under 10x lens)



Background

SERPINA5 (also called Protein C Inhibitor, PCI) is a serpin type of serine protease inhibitor that is found in many tissues and fluids in human, including blood plasma, seminal plasma and urine. PCI found in blood originates from the liver and is capable of inhibiting several serine proteases involved in the regulation of coagulation and fibrinolysis, including activated protein C, thrombin, factor Xa, various kallikreins and plasminogen activators. PCI has been found to have antimicrobial and antitumor properties and thus appears to be a multi-functional protein.

Applications

Tested applications: ELISA, WB, IHC, IF

Cited applications: IHC

Species specificity: Human; other species not tested.

Cited species: Human

Calculated Protein C inhibitor MW: 46 kDa

Observed Protein C inhibitor MW: 46 kDa

Positive WB detected in HepG2 cells, A549 cells, HeLa cells, Jurkat cells, L02 cells, PC-3 cells

Positive IHC detected in Human ovary tumor tissue, human breast cancer tissue, human testis tissue

Positive IF detected in HepG2 cells

Recommended dilution: WB: 1:500-1:5000

IHC: 1:20-1:200

IF: 1:50-1:500

Application key: WB = Western blotting, IHC = Immunohistochemistry, IF = Immunofluorescence, IP = Immunoprecipitation

Immunogen information

Immunogen: Ag1078

GenBank accession number: BC008915

Gene ID (NCBI): 5104

Full name: Serpin peptidase inhibitor, clade A (alpha-1 antiproteinase, antitrypsin), member 5

Product information

Purification method: Antigen affinity purification

Storage: PBS with 0.1% sodium azide and 50% glycerol pH 7.3. Store at -20°C.

**Immunohistochemistry of
paraffin-embedded human
ovary tumor tissue slide using
10673-1-AP(SERPINA5
Antibody) at dilution of 1:50
(under 40x lens)**