

HSPH1 Polyclonal Antibody

Catalog number: 13383-1-AP

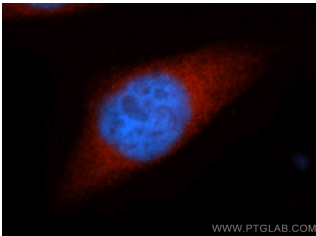
Size: 58 µg/150 µl

Source: Rabbit

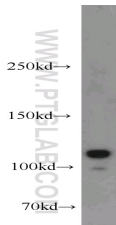
Isotype: IgG

Synonyms:

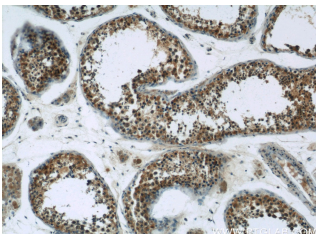
HSPH1; Antigen NY CO 25, DKFZp686M05240, Heat shock 110 kDa protein, Heat shock protein 105 kDa, HSP105, HSP105A, HSP105B, HSP110, HSPH1, KIAA0201, NY CO 25



Immunofluorescent analysis of HeLa cells, using HSPH1 antibody 13383-1-AP at 1:50 dilution and Rhodamine-labeled goat anti-rabbit IgG (red). Blue pseudocolor = DAPI (fluorescent DNA dye).



MCF7 cells were subjected to SDS PAGE followed by western blot with 13383-1-AP(HSPH1 antibody) at dilution of 1:1000



Immunohistochemistry of paraffin-embedded human testis tissue slide using 13383-1-AP(HSPH1 Antibody) at dilution of 1:50 (under 10x lens)

Background

HSP105, also known as HSP110 or HSPH1, belongs to the heat shock protein (HSP) family. Human HSP105 is a high-molecular-weight chaperone protein expressed at constitutively low levels as a cytoplasmic α -isoform and as an inducible nuclear β -isoform on exposure to various forms of stress. HSP105 is constitutively overexpressed in several solid tumors, including melanoma, breast, thyroid, and gastroenteric cancers, and exerts antiapoptotic functions. Recently HSP105 has been identified as a novel candidate biomarker of lymphoma aggressiveness. This antibody recognizes both HSP105 α and HSP105 β isoforms. Western blot analysis using this antibody detected a major band around 100-110kD in Jurkat cells.

Applications

Tested applications:	ELISA, WB, IF, IHC
Cited applications:	WB
Species specificity:	Human; other species not tested.
Cited species:	Mouse
Calculated HSPH1 MW:	858aa,97 kDa
Observed HSPH1 MW:	105 kDa
Positive WB detected in	MCF7 cells, HeLa cells, human brain tissue, Jurkat cells, K-562 cells
Positive IHC detected in	Human testis tissue, human colon cancer tissue, human liver cancer tissue, human pancreas cancer tissue
Positive IF detected in	HeLa cells
Recommended dilution:	WB: 1:500-1:5000 IHC: 1:20-1:200 IF: 1:20-1:200

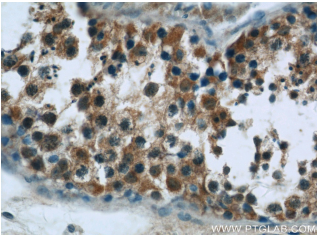
Application key: WB = Western blotting, IHC = Immunohistochemistry, IF = Immunofluorescence, IP = Immunoprecipitation

Immunogen information

Immunogen:	Ag4224
GenBank accession number:	BC037553
Gene ID (NCBI):	10808
Full name:	Heat shock 105kDa/110kDa protein 1

Product information

Purification method:	Antigen affinity purification
Storage:	PBS with 0.02% sodium azide and 50% glycerol pH 7.3. Store at -20°C.



Immunohistochemistry of paraffin-embedded human testis tissue slide using 13383-1-AP (HSPH1 Antibody) at dilution of 1:50 (under 40x lens)