

PANX1 Polyclonal Antibody

Catalog number: 12595-1-AP

Size: 21 µg/150 µl

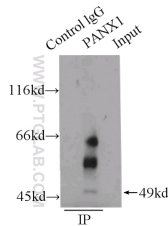
Source: Rabbit

Isotype: IgG

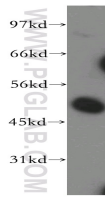
Synonyms:

PANX1; MRS1, pannexin 1,

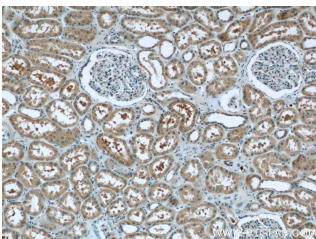
PANX1, PX1, UNQ2529



IP Result of anti-PANX1 (IP:12595-1-AP, 3µg; Detection:12595-1-AP 1:400) with HeLa cells lysate 2000µg.



human brain tissue were subjected to SDS PAGE followed by western blot with 12595-1-AP(PANX1 antibody) at dilution of 1:500



Immunohistochemistry of paraffin-embedded human kidney tissue slide using 12595-1-AP(PANX1 Antibody) at dilution of 1:50 (under 10x lens)

Background

PANX1, also named as MRS1, belongs to the pannexin family. It plays a role as a Ca²⁺-leak channel to regulate ER Ca²⁺ homeostasis. It is a structural component of the gap junctions and the hemichannels. PANX1 induced the formation of intercellular channels with characteristics of gap junctions. PANX1 is 48-kDa protein which contains 4 transmembrane domains and cytoplasmic N and C termini. It is a mediator of find-me signal/nucleotide release from apoptotic cells.

Applications

Tested applications:	ELISA, WB, IP, IHC
Species specificity:	Human; other species not tested.
Calculated PANX1 MW:	426aa,48 kDa
Observed PANX1 MW:	48kd,98kd
Positive WB detected in	Human brain tissue, HeLa cells
Positive IP detected in	HeLa cells
Positive IHC detected in	Human kidney tissue
Recommended dilution:	WB: 1:200-1:2000
	IP: 1:200-1:1000
	IHC: 1:20-1:200

Application key: WB = Western blotting, IHC = Immunohistochemistry, IF = Immunofluorescence, IP = Immunoprecipitation

Immunogen information

Immunogen:	Ag3174
GenBank accession number:	BC016931
Gene ID (NCBI):	24145
Full name:	Pannexin 1

Product information

Purification method:	Antigen affinity purification
Storage:	PBS with 0.02% sodium azide and 50% glycerol pH 7.3. Store at -20°C.