

SAA2 Polyclonal Antibody

Catalog number: 13192-1-AP

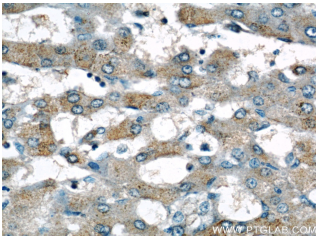
Size: 48 µg/150 µl

Source: Rabbit

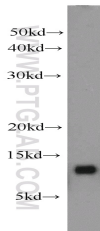
Isotype: IgG

Synonyms:

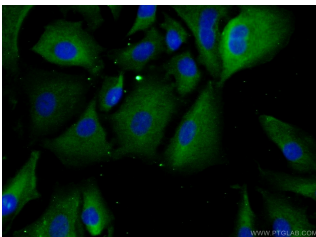
SAA2; SAA, SAA1, SAA2,
Serum amyloid A protein,
serum amyloid A2



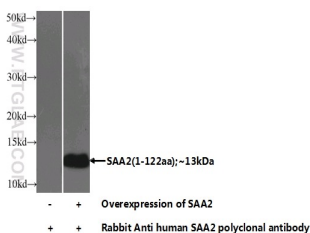
Immunohistochemical of paraffin-embedded human hepatocirrhosis using 13192-1-AP (SAA2 antibody) at dilution of 1:50 (under 40x lens)



A549 cells were subjected to SDS PAGE followed by western blot with 13192-1-AP (SAA2 antibody) at dilution of 1:1000



Immunofluorescent analysis of (-20 Ethanol) fixed A549 cells using 13192-1-AP (SAA2 Antibody) at dilution of 1:25 and Alexa Fluor 488-conjugated AffiniPure Goat Anti-Rabbit IgG(H+L)



Transfected HEK-293 cells were subjected to SDS PAGE

Applications

Tested applications:	ELISA, IHC, WB, IF
Species specificity:	Human; other species not tested.
Calculated SAA2 MW:	122aa, 14 kDa
Observed SAA2 MW:	12-13 kDa
Positive WB detected in	A549 cells, Transfected HEK-293 cells
Positive IHC detected in	Human hepatocirrhosis tissue
Positive IF detected in	A549 cells
Recommended dilution:	WB: 1:500-1:5000 IHC: 1:20-1:200 IF: 1:10-1:100

Application key: WB = Western blotting, IHC = Immunohistochemistry, IF = Immunofluorescence, IP = Immunoprecipitation

Immunogen information

Immunogen:	Ag3869
GenBank accession number:	BC020795
Gene ID (NCBI):	6289
Full name:	Serum amyloid A2

Product information

Purification method:	Antigen affinity purification
Storage:	PBS with 0.1% sodium azide and 50% glycerol pH 7.3. Store at -20°C.

followed by western blot with
13192-1-AP(SAA2 Antibody)
at dilution of 1:1000