

PRIM2 Polyclonal Antibody

Catalog number: 11788-1-AP

Size: 30 µg/150 µl

Source: Rabbit

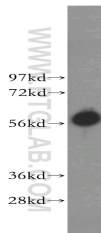
Isotype: IgG

Synonyms:

PRIM2; DNA primase 58 kDa

subunit, DNA primase large

subunit, p58, PRIM2, PRIM2A



A375 cells were subjected to SDS PAGE followed by western blot with 11788-1-AP (PRIM2 antibody) at dilution of 1:500

Applications

Tested applications:	ELISA, WB
Species specificity:	Human, Mouse, Rat; other species not tested.
Calculated PRIM2 MW:	58 kDa
Observed PRIM2 MW:	58 kDa
Positive WB detected in	A375 cells
Recommended dilution:	WB: 1:500-1:5000

Application key: WB = Western blotting, IHC = Immunohistochemistry, IF = Immunofluorescence, IP = Immunoprecipitation

Immunogen information

Immunogen:	Ag2370
GenBank accession number:	BC017833
Gene ID (NCBI):	5558
Full name:	Primase, DNA, polypeptide 2 (58kDa)

Product information

Purification method:	Antigen affinity purification
Storage:	PBS with 0.1% sodium azide and 50% glycerol pH 7.3. Store at -20°C.