

## AMD1 Polyclonal Antibody

Catalog number: 11052-1-AP

Size: 24 µg/150 µl

Source: Rabbit

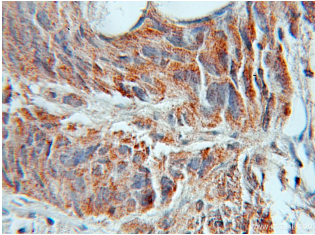
Isotype: IgG

Synonyms:

AMD1; ADOMETDC; AMD;

DKFZp313L1234; FLJ26964;

SAMDC



Immunohistochemistry of paraffin-embedded human prostate cancer using 11052-1-AP (AMD1 Antibody) at Dilution 1:50 (under 10x lens)

### Applications

Tested applications:	ELISA, IHC
Species specificity:	Human, mouse, rat; other species not tested.
Calculated AMD1 MW:	38kd or 32kd
Observed AMD1 MW:	38kd or 32kd
Positive IHC detected in:	Human prostate cancer
Recommended dilution:	IHC: 1:50-1:200

Application key: WB = Western blotting, IHC = Immunohistochemistry, IF = Immunofluorescence, IP = Immunoprecipitation, FC = Flow cytometry

### Immunogen information

Immunogen:	Ag1525
GenBank accession number:	BC000171
Gene ID (NCBI):	262
Full name:	Adenosylmethionine decarboxylase 1

### Product information

Purification method:	Antigen affinity purification
Storage:	PBS with 0.1% sodium azide and 50% glycerol pH 7.3. Store at -20°C.