

## AP1M1 Polyclonal Antibody

Catalog number: 12112-1-AP

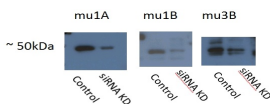
Size: 20 µg/150 µl

Source: Rabbit

Isotype: IgG

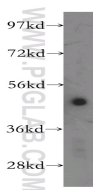
Synonyms:

AP1M1; AP 1 complex subunit mu 1, AP mu chain family member mu1A, AP1M1, AP47, CLAPM2, CLTNM, MU 1A, Mu adaptin 1, Mu1A adaptin

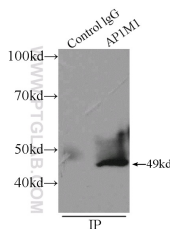


AP1M1 is mu1A: 12112-1-AP, AP1M2 is mu1B: 10618-1-AP, AP3M2 is mu3B: 11925-1-AP, acceptable bands ~50 kDa showing some degree of siRNA knockdown

WB result of AP1M1 antibody (12112-1-AP, 1:500) with siRNA cell lysate.



human brain tissue were subjected to SDS PAGE followed by western blot with 12112-1-AP(AP1M1 antibody) at dilution of 1:400



IP Result of anti-AP1M1 (IP:12112-1-AP, 4µg; Detection:12112-1-AP 1:500) with SH-SY5Y cells lysate 2500µg.

### Background

AP1M1, also named as CLTNM, Mu-adaptin 1 and Clathrin coat assembly protein AP47, belongs to the adaptor complexes medium subunit family. It is a subunit of clathrin-associated adaptor protein complex 1 that plays a role in protein sorting in the trans-Golgi network (TGN) and endosomes. The AP complexes mediate the recruitment of clathrin to membranes and the recognition of sorting signals within the cytosolic tails of transmembrane cargo molecules.

### Applications

Tested applications:	ELISA, WB, IP
Cited applications:	IF, WB
Species specificity:	Human, Mouse, Rat; other species not tested.
Cited species:	Canine, human, mouse
Calculated AP1M1 MW:	423aa, 49 kDa
Observed AP1M1 MW:	49 kDa
Positive WB detected in	Human brain tissue, Hacat cells, rat brain tissue, SH-SY5Y cells
Positive IP detected in	SH-SY5Y cells
Recommended dilution:	WB: 1:200-1:2000 IP: 1:200-1:2000

Application key: WB = Western blotting, IHC = Immunohistochemistry, IF = Immunofluorescence, IP = Immunoprecipitation

### Immunogen information

Immunogen:	Ag2757
GenBank accession number:	BC017469
Gene ID (NCBI):	8907
Full name:	Adaptor-related protein complex 1, mu 1 subunit

### Product information

Purification method:	Antigen affinity purification
Storage:	PBS with 0.1% sodium azide and 50% glycerol pH 7.3. Store at -20°C.