

SERPINB8 Polyclonal Antibody

Catalog number: 13102-2-AP

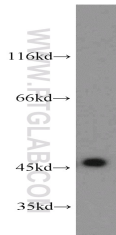
Size: 20 µg/150 µl

Source: Rabbit

Isotype: IgG

Synonyms:

SERPINB8; CAP2; PI8



Jurkat cells were subjected to SDS PAGE followed by western blot with 13102-2-AP(SERPINB8 Antibody) at dilution of 1:600

Applications

| | |
|--------------------------|--|
| Tested applications: | ELISA, WB |
| Species specificity: | Human, mouse, rat; other species not tested. |
| Positive WB detected in: | Jurkat cells, mouse lung tissue |
| Calculated SERPINB8 MW: | 374aa,43kd |
| Observed SERPINB8 MW: | 45-48kd |
| Recommended dilution: | WB: 1:200-1:2000 |

Application key: WB = Western blotting, IHC = Immunohistochemistry, IF = Immunofluorescence, IP = Immunoprecipitation, FC = Flow cytometry

Immunogen information

| | |
|---------------------------|---|
| Immunogen: | Ag3740 |
| GenBank accession number: | BC034528 |
| Gene ID (NCBI): | 5271 |
| Full name: | Serpin peptidase inhibitor, clade B (ovalbumin), member 8 |

Product information

| | |
|----------------------|--|
| Purification method: | Antigen affinity purification |
| Storage: | PBS with 0.02% sodium azide and 50% glycerol pH 7.3. Store at -20°C. |