

YAP1 Polyclonal Antibody

Catalog number: 13584-1-AP

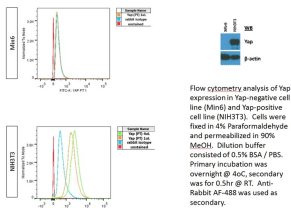
Size: 45 µg/150 µl

Source: Rabbit

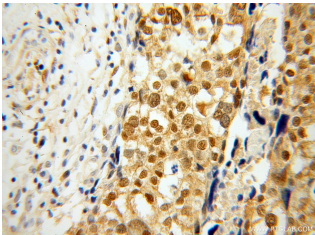
Isotype: IgG

Synonyms:

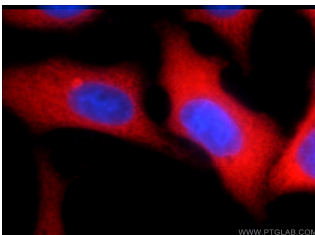
YAP1; 65 kDa Yes associated protein, YAP, YAP1, YAP2, YAP65, YKI, Yorkie homolog



FC result of YAP antibody (13584-1-AP) with Min6 and NIH3T3 cell by Sarvetnick Lab, UNMC



Immunohistochemical of paraffin-embedded human ovary tumor using 13584-1-AP (YAP1 antibody) at dilution of 1:100 (under 40x lens)



Immunofluorescent analysis of HepG2 cells using 13584-1-AP (YAP1 Antibody) at dilution of 1:50 and Rhodamine-Goat anti-Rabbit IgG

Background

Yes-associated protein 1 (YAP1) is a transcriptional regulator which can act both as a coactivator and a corepressor and is the critical downstream regulatory target in the Hippo signaling pathway that plays a pivotal role in organ size control and tumor suppression by restricting proliferation and promoting apoptosis. The core of this pathway is composed of a kinase cascade wherein STK3/MST2 and STK4/MST1, in complex with its regulatory protein SAV1, phosphorylates and activates LATS1/2 in complex with its regulatory protein MOB1, which in turn phosphorylates and inactivates YAP1 oncoprotein and WWTR1/TAZ. Plays a key role to control cell proliferation in response to cell contact. Phosphorylation of YAP1 by LATS1/2 inhibits its translocation into the nucleus to regulate cellular genes important for cell proliferation, cell death, and cell migration. The presence of TEAD transcription factors are required for it to stimulate gene expression, cell growth, anchorage-independent growth, and epithelial mesenchymal transition (EMT) induction. Isoform 2 and isoform 3 can activate the C-terminal fragment (CTF) of ERBB4 (isoform 3). Increased expression seen in some liver and prostate cancers. Isoforms lacking the transactivation domain found in striatal neurons of patients with Huntington disease (at protein level). It is activated by phosphorylation and degraded by ubiquitination (20048001). This antibody is a rabbit polyclonal antibody.

Applications

Tested applications:	ELISA, IHC, FC, IF, IP, WB
Cited applications:	FC, IF, IHC, WB
Species specificity:	Human, Mouse, Zebrafish; other species not tested.
Cited species:	Human, mouse, zebrafish
Calculated YAP1 MW:	504aa, 54 kDa
Observed YAP1 MW:	65-70 kDa
Positive WB detected in	HeLa cells, MCF-7 cells
Positive IP detected in	NIH/3T3 cells
Positive IHC detected in	Human ovary tumor tissue
Positive IF detected in	HepG2 cells
Positive FC detected in	NIH3T3 cells
Recommended dilution:	WB: 1:500-1:5000 IP: 1:200-1:2000 IHC: 1:20-1:200 IF: 1:20-1:200 FC: 1:20-1:200

Application key: WB = Western blotting, IHC = Immunohistochemistry, IF = Immunofluorescence, IP = Immunoprecipitation

Immunogen information

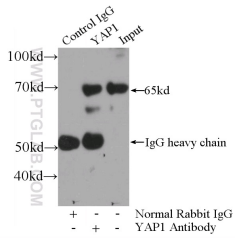
Immunogen:	Ag4510
GenBank accession number:	BC038235
Gene ID (NCBI):	10413
Full name:	Yes-associated protein 1, 65kDa

Product information

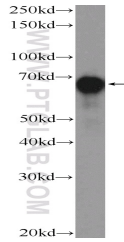
Purification method:	Antigen affinity purification
----------------------	-------------------------------

Storage:

PBS with 0.02% sodium azide and 50% glycerol pH 7.3. Store at -20°C.



**IP Result of anti-YAP1
(IP:13584-1-AP, 3ug;
Detection:13584-1-AP 1:700)
with NIH/3T3 cells lysate
1200ug.**



**HeLa cells were subjected to
SDS PAGE followed by
western blot with 13584-1-
AP (YAP1 Antibody) at
dilution of 1:1000**