

SHC3 Polyclonal Antibody

Catalog number: 12436-1-AP

Size: 50 µg/150 µl

Source: Rabbit

Isotype: IgG

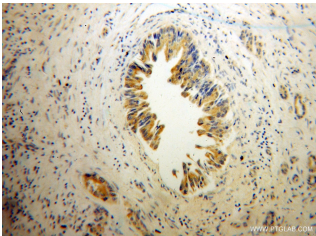
Synonyms:

SHC3; N Shc, Neuronal Shc, NSHC, Protein Rai, RAI, SH2 domain protein C3, SHC transforming protein 3, SHC transforming protein C, SHC3, SHCC

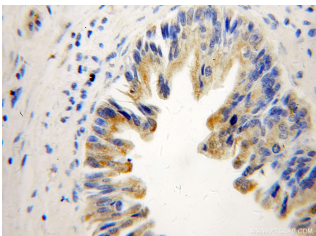
Applications

Tested applications:	ELISA, WB, IHC, IP
Species specificity:	Human, Mouse, Rat; other species not tested.
Calculated SHC3 MW:	594aa, 64 kDa
Observed SHC3 MW:	64 kDa
Positive WB detected in	BxPC-3 cells
Positive IP detected in	BxPC-3 cells
Positive IHC detected in	Human pancreas cancer tissue
Recommended dilution:	WB: 1:500-1:5000
	IP: 1:200-1:1000
	IHC: 1:20-1:200

Application key: WB = Western blotting, IHC = Immunohistochemistry, IF = Immunofluorescence, IP = Immunoprecipitation



Immunohistochemical of paraffin-embedded human pancreas cancer using 12436-1-AP (SHC3 antibody) at dilution of 1:50 (under 10x lens)



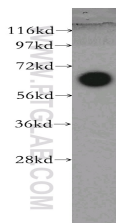
Immunohistochemical of paraffin-embedded human pancreas cancer using 12436-1-AP (SHC3 antibody) at dilution of 1:50 (under 40x lens)

Immunogen information

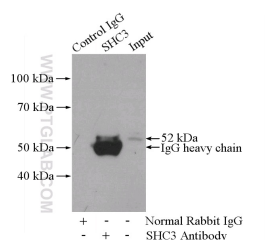
Immunogen:	Ag3115
GenBank accession number:	BC026314
Gene ID (NCBI):	53358
Full name:	SHC (Src homology 2 domain containing) transforming protein 3

Product information

Purification method:	Antigen affinity purification
Storage:	PBS with 0.1% sodium azide and 50% glycerol pH 7.3. Store at -20°C.



BxPC-3 cells were subjected to SDS PAGE followed by western blot with 12436-1-AP (SHC3 antibody) at dilution of 1:400



IP Result of anti-SHC3
(IP:12436-1-AP, 4ug;
Detection:12436-1-AP 1:300)
with BxPC-3 cells lysate
2800ug.