

## KYNU Polyclonal Antibody

Catalog number: 11796-1-AP

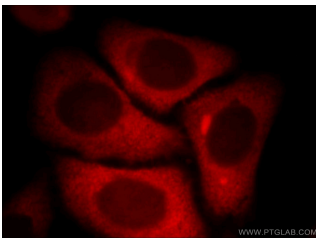
Size: 23 µg/150 µl

Source: Rabbit

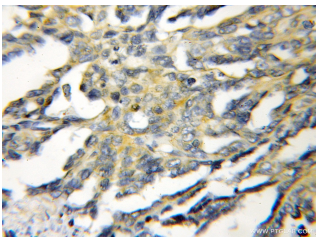
Isotype: IgG

Synonyms:

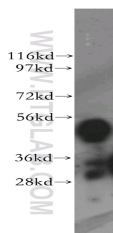
KYNU; KYNU, Kynureninase, L  
kynurenine hydrolase



Immunofluorescent analysis of HepG2 cells, using KYNU antibody 11796-1-AP at 1:25 dilution and Rhodamine-labeled goat anti-rabbit IgG (red).



Immunohistochemical of paraffin-embedded human ovary tumor using 11796-1-AP(KYNU antibody) at dilution of 1:50 (under 10x lens)



HeLa cells were subjected to SDS PAGE followed by western blot with 11796-1-AP(KYNU antibody) at dilution of 1:2000

### Background

KYNU(kynureninase) is also named as L-kynurenine hydrolase and belongs to the kynureninase family. It is a pyridoxal-5'-phosphate-(pyridoxal-P)-dependent enzyme that catalyses the cleavage of L-kynurenine and L-3-hydroxykynurenine into anthranilic and 3-hydroxyanthranilic acids, respectively(PMID:8706755). In SDS-PAGE, it can detect a 48 kDa band lower than the predicted molecular weight of 92 kDa due to limited proteolysis of the enzyme which might occur during handling of the protein(PMID:8706755). This protein is a 95-kD homodimer predominantly located in the cytoplasm(PMID:9180257). It has 2 isoforms produced by alternative splicing.

### Applications

Tested applications:	ELISA, WB, IHC, IF
Species specificity:	Human, Mouse, Rat; other species not tested.
Calculated KYNU MW:	465aa, 52 kDa; 307aa, 35 kDa
Observed KYNU MW:	52kd
Positive WB detected in	HeLa cells
Positive IHC detected in	Human ovary tumor tissue
Positive IF detected in	HepG2 cells
Recommended dilution:	WB: 1:1000-1:10000 IHC: 1:20-1:200 IF: 1:10-1:100

Application key: WB = Western blotting, IHC = Immunohistochemistry, IF = Immunofluorescence, IP = Immunoprecipitation

### Immunogen information

Immunogen:	Ag2365
GenBank accession number:	BC000879
Gene ID (NCBI):	8942
Full name:	Kynureninase (L-kynurenine hydrolase)

### Product information

Purification method:	Antigen affinity purification
Storage:	PBS with 0.1% sodium azide and 50% glycerol pH 7.3. Store at -20°C.