

## SNAP23 Polyclonal Antibody

Catalog number: 10825-1-AP

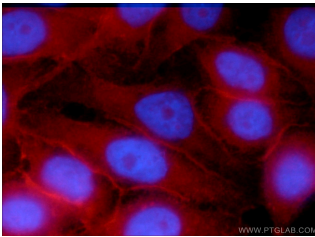
Size: 85 µg/150 µl

Source: Rabbit

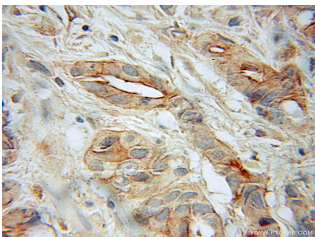
Isotype: IgG

Synonyms:

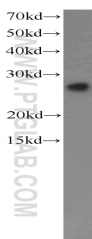
SNAP23; HsT17016, SNAP 23, SNAP23, SNAP23A, SNAP23B



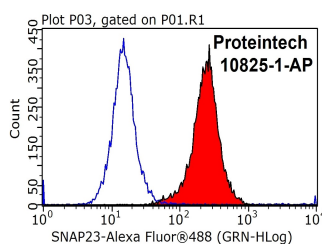
Immunofluorescent analysis of HepG2 cells, using SNAP23 antibody 10825-1-AP at 1:50 dilution and Rhodamine-labeled goat anti-rabbit IgG (red). Blue pseudocolor = DAPI (fluorescent DNA dye).



Immunohistochemical of paraffin-embedded human prostate cancer using 10825-1-AP (SNAP23 antibody) at dilution of 1:50 (under 10x lens)



HepG2 cells were subjected to SDS PAGE followed by western blot with 10825-1-AP (SNAP23 antibody) at dilution of 1:1000



1X10<sup>6</sup> HepG2 cells were stained with 0.2ug SNAP23

### Applications

<b>Tested applications:</b>	ELISA, WB, IHC, IF, FC, IP
<b>Species specificity:</b>	Human, Mouse, Rat; other species not tested.
<b>Calculated SNAP23 MW:</b>	23 kDa
<b>Observed SNAP23 MW:</b>	23-25 kDa
<b>Positive WB detected in</b>	HepG2 cells, HeLa cells
<b>Positive IP detected in</b>	HeLa cells
<b>Positive IHC detected in</b>	Human prostate cancer tissue, human placenta tissue
<b>Positive IF detected in</b>	HepG2 cells
<b>Positive FC detected in</b>	HepG2 cells
<b>Recommended dilution:</b>	WB: 1:500-1:5000 IP: 1:200-1:2000 IHC: 1:20-1:200 IF: 1:20-1:200 FC: N/A

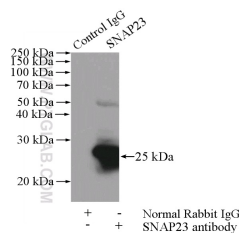
Application key: WB = Western blotting, IHC = Immunohistochemistry, IF = Immunofluorescence, IP = Immunoprecipitation

### Immunogen information

<b>Immunogen:</b>	Ag1269
<b>GenBank accession number:</b>	BC000148
<b>Gene ID (NCBI):</b>	8773
<b>Full name:</b>	Synaptosomal-associated protein, 23kDa

### Product information

<b>Purification method:</b>	Antigen affinity purification
<b>Storage:</b>	PBS with 0.1% sodium azide and 50% glycerol pH 7.3. Store at -20°C.



IP Result of anti-SNAP23  
(IP:10825-1-AP, 4ug;

antibody (10825-1-AP, red)      Detection:10825-1-AP 1:500)  
and control antibody (blue).      with HeLa cells lysate 880ug.  
Fixed with 90% MeOH  
blocked with 3% BSA (30  
min). Alexa Fluor 488-  
conjugated AffiniPure Goat  
Anti-Rabbit IgG(H+L) with  
dilution 1:1000.