

SRP9 Polyclonal Antibody

Catalog number: 11195-1-AP

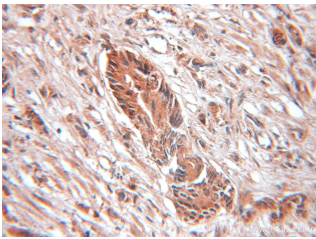
Size: 50 µg/150 µl

Source: Rabbit

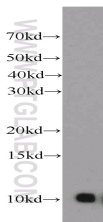
Isotype: IgG

Synonyms:

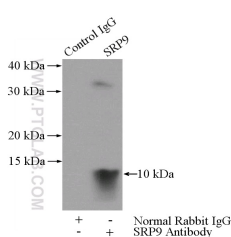
SRP9; ALURBP, SRP9



Immunohistochemical of paraffin-embedded human prostate cancer using 11195-1-AP(SRP9 antibody) at dilution of 1:100 (under 10x lens)



HepG2 cells were subjected to SDS PAGE followed by western blot with 11195-1-AP(SRP9 antibody) at dilution of 1:1000



IP Result of anti-SRP9 (IP:11195-1-AP, 3µg; Detection:11195-1-AP 1:500) with HepG2 cells lysate 3600µg.

Background

Signal recognition particle 9(SRP9) is component of the signal recognition particle (SRP), which is a ribonucleoprotein complex that mediates the targeting of proteins to the rough endoplasmic reticulum (ER). SRP9 form a heterodimer with SRP14, which involves in arrest of the elongation of the nascent chains during targeting to ensure efficient translocation of the preprotein.

Applications

Tested applications:	ELISA, WB, IHC, IP
Cited applications:	IHC, IP, WB
Species specificity:	Human, Mouse, Rat; other species not tested.
Cited species:	Human, mouse
Calculated SRP9 MW:	10 kDa
Observed SRP9 MW:	10 kDa
Positive WB detected in	HepG2 cells, A2780 cells, MCF7 cells, mouse colon tissue, SKOV-3 cells
Positive IP detected in	HepG2 cells
Positive IHC detected in	Human prostate cancer tissue
Recommended dilution:	WB: 1:500-1:5000 IP: 1:200-1:2000 IHC: 1:20-1:200

Application key: WB = Western blotting, IHC = Immunohistochemistry, IF = Immunofluorescence, IP = Immunoprecipitation

Immunogen information

Immunogen:	Ag1683
GenBank accession number:	BC015094
Gene ID (NCBI):	6726
Full name:	Signal recognition particle 9kDa

Product information

Purification method:	Antigen affinity purification
Storage:	PBS with 0.1% sodium azide and 50% glycerol pH 7.3. Store at -20°C.