

PSME1 Polyclonal Antibody

Catalog number: 10543-1-AP

Size: 47 µg/150 µl

Source: Rabbit

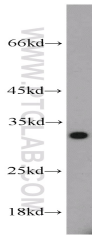
Isotype: IgG

Synonyms:

PSME1; IFI5111, IGUP I 5111,

PA28A, PA28alpha, PSME1,

REG alpha, REGalpha



mouse spleen tissue were subjected to SDS PAGE followed by western blot with 10543-1-AP(PSME1 antibody) at dilution of 1:500

Background

The principal function of the proteasome is targeted degradation of intracellular proteins. Activity of the 20S proteasome is controlled by regulatory complexes that bind to the ends of the cylindrical proteasome. 11S regulator (REG or PA28), is a complex of 28 kDa subunits that is thought to activate proteasomes toward the production of antigenic peptides. Human PSME1 and PSME2 genes encode the two proteasome activators PA28 alpha and beta, respectively, which have been implicated in antigen processing for loading class I MHC molecules. The PA28 activator complex enhances the generation of class I binding peptides by altering the cleavage pattern of the proteasome.

Applications

Tested applications:	ELISA, WB
Cited applications:	WB
Species specificity:	Human,Mouse,Rat; other species not tested.
Cited species:	Mouse
Calculated PSME1 MW:	29 kDa
Observed PSME1 MW:	29-33kd
Positive WB detected in	Mouse spleen tissue
Recommended dilution:	WB: 1:200-1:2000

Application key: WB = Western blotting, IHC = Immunohistochemistry, IF = Immunofluorescence, IP = Immunoprecipitation

Immunogen information

Immunogen:	Ag0831
GenBank accession number:	BC007503
Gene ID (NCBI):	5720
Full name:	Proteasome (prosome, macropain) activator subunit 1 (PA28 alpha)

Product information

Purification method:	Antigen affinity purification
Storage:	PBS with 0.1% sodium azide and 50% glycerol pH 7.3. Store at -20°C.