

Cofilin 2 Polyclonal Antibody

Catalog number: 11848-1-AP

Size: 22 µg/150 µl

Source: Rabbit

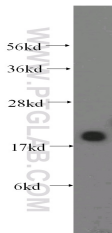
Isotype: IgG

Synonyms:

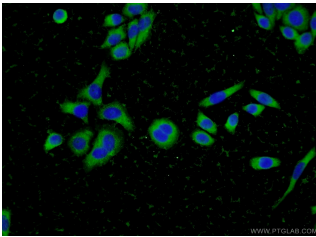
CFL2; CFL2, Cofilin 2, cofilin 2

(muscle), Cofilin, muscle

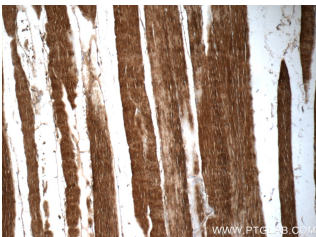
isoform, NEM7



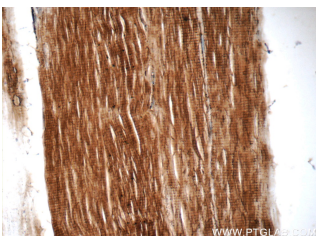
human liver tissue were subjected to SDS PAGE followed by western blot with 11848-1-AP(CFL2 antibody) at dilution of 1:400



Immunofluorescent analysis of L02 cells using 11848-1-AP(CFL2 Antibody) at dilution of 1:50 and Alexa Fluor 488-conjugated AffiniPure Goat Anti-Rabbit IgG(H+L)



Immunohistochemistry of paraffin-embedded human skeletal muscle tissue slide using 11848-1-AP(CFL2 Antibody) at dilution of 1:50 (under 10x lens)



Immunohistochemistry of

Applications

Tested applications:	ELISA, WB, IHC, IF
Species specificity:	Human, Mouse, Rat; other species not tested.
Calculated Cofilin 2 MW:	166aa, 19 kDa
Observed Cofilin 2 MW:	19 kDa
Positive WB detected in	Human liver tissue, L02 cells, mouse liver tissue, mouse lung tissue, mouse skeletal muscle tissue
Positive IHC detected in	Human skeletal muscle tissue, human gliomas tissue, human heart tissue
Positive IF detected in	L02 cells
Recommended dilution:	WB: 1:500-1:5000 IHC: 1:20-1:200 IF: 1:20-1:200

Application key: WB = Western blotting, IHC = Immunohistochemistry, IF = Immunofluorescence, IP = Immunoprecipitation

Immunogen information

Immunogen:	Ag2408
GenBank accession number:	BC022876
Gene ID (NCBI):	1073
Full name:	Cofilin 2 (muscle)

Product information

Purification method:	Antigen affinity purification
Storage:	PBS with 0.1% sodium azide and 50% glycerol pH 7.3. Store at -20°C.

paraffin-embedded human
skeletal muscle tissue slide
using 11848-1-AP (CFL2
Antibody) at dilution of 1:50
(under 40x lens)