

CUL3 Polyclonal Antibody

Catalog number: 11107-1-AP

Size: 30 µg/150 µl

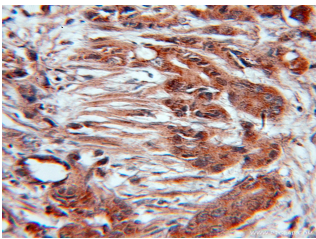
Source: Rabbit

Isotype: IgG

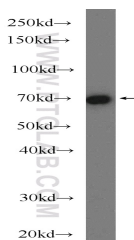
Synonyms:

CUL3; CUL 3, CUL3, cullin 3,

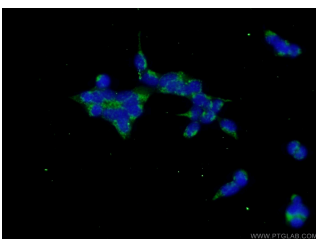
KIAA0617



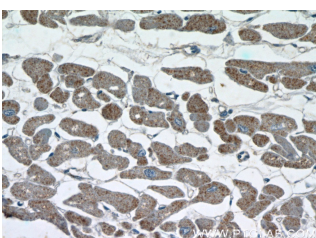
Immunohistochemical of paraffin-embedded human prostate cancer using 11107-1-AP (CUL3 antibody) at dilution of 1:100 (under 10x lens)



HeLa cells were subjected to SDS PAGE followed by western blot with 11107-1-AP (CUL3 Antibody) at dilution of 1:1000



Immunofluorescent analysis of HEK-293 cells using 11107-1-AP(CUL3 Antibody) at dilution of 1:50 and Alexa Fluor 488-conjugated AffiniPure Goat Anti-Rabbit IgG(H+L)



Immunohistochemistry of paraffin-embedded human heart tissue slide using 11107-

Background

Cullin-RING-based BCR (BTB-CUL3-RBX1) E3 ligase are the largest family of ubiquitin ligases which mediate the ubiquitination and subsequent proteasomal degradation of target proteins. One of seven cullin proteins serves as a scaffold protein for the assembly of the multisubunit ubiquitin ligase complex. CUL3 (Cullin-3) ubiquitin ligase complex targets multiple substrate for ubiquitination including cyclin E and of cyclin D1. Defects in CUL3 are the cause of Pseudohypaldosteronism type 2E (PHA2E) characterized by severe hypertension, hyperkalemia, hyperchloremia, hyperchloremic metabolic acidosis, and correction of physiologic abnormalities by thiazide diuretics.

Applications

Tested applications:	ELISA, IHC, WB, IF
Species specificity:	Human, Mouse, Rat; other species not tested.
Calculated CUL3 MW:	89 kDa
Observed CUL3 MW:	89kd
Positive WB detected in	HeLa cells
Positive IHC detected in	Human prostate cancer tissue, human heart tissue
Positive IF detected in	HEK-293 cells
Recommended dilution:	WB: 1:500-1:5000
	IHC: 1:20-1:200
	IF: 1:20-1:200

Application key: WB = Western blotting, IHC = Immunohistochemistry, IF = Immunofluorescence, IP = Immunoprecipitation

Immunogen information

Immunogen:	Ag1555
GenBank accession number:	BC039598
Gene ID (NCBI):	8452
Full name:	Cullin 3

Product information

Purification method:	Antigen affinity purification
Storage:	PBS with 0.1% sodium azide and 50% glycerol pH 7.3. Store at -20°C.

**1-AP(CUL3 Antibody) at
dilution of 1:50 (under 40x
lens)**