

SLC5A11 Polyclonal Antibody

Catalog number: 14089-1-AP

Size: 20 µg/150 µl

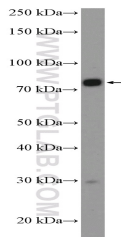
Source: Rabbit

Isotype: IgG

Synonyms:

SLC5A11; KST1, RKST1, SGLT6,

SLC5A11, SLGTX, SMIT2



COLO 320 cells were subjected to SDS PAGE followed by western blot with 14089-1-AP (SLC5A11 Antibody) at dilution of 1:300

Applications

Tested applications:	ELISA, WB
Species specificity:	Human; other species not tested.
Calculated SLC5A11 MW:	611aa, 67 kDa
Observed SLC5A11 MW:	74 kDa
Positive WB detected in	COLO 320 cells
Recommended dilution:	WB: 1:200-1:1000

Application key: WB = Western blotting, IHC = Immunohistochemistry, IF = Immunofluorescence, IP = Immunoprecipitation

Immunogen information

Immunogen:	Ag5220
GenBank accession number:	BC057780
Gene ID (NCBI):	115584
Full name:	Solute carrier family 5 (sodium/glucose cotransporter), member 11

Product information

Purification method:	Antigen affinity purification
Storage:	PBS with 0.02% sodium azide and 50% glycerol pH 7.3. Store at -20°C.