

Claudin 1 Polyclonal Antibody

Catalog number: 13050-1-AP

Size: 30 µg/150 µl

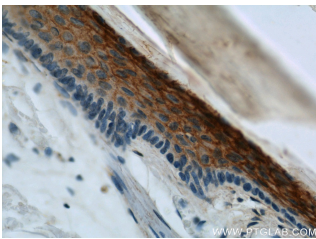
Source: Rabbit

Isotype: IgG

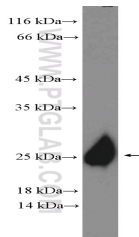
Synonyms:

CLDN1; claudin 1, CLD1,

CLDN1, ILVASC, SEMP1



Immunohistochemical of paraffin-embedded human skin using 13050-1-AP (CLDN1 antibody) at dilution of 1:50 (under 40x lens)



mouse skin tissue were subjected to SDS PAGE followed by western blot with 13050-1-AP (Claudin 1 Antibody) at dilution of 1:600

Background

Claudins are a family of proteins that are the most important components of the tight junctions, where they establish the paracellular barrier that controls the flow of molecules in the intercellular space between the cells of an epithelium. 23 claudins have been identified. They are small (20-27 kilodalton (kDa)) proteins with very similar structure. They have four transmembrane domains, with the N-terminus and the C-terminus in the cytoplasm. Claudin-1 is expressed primarily in keratinocytes and normal mammary epithelial cells.

Applications

Tested applications:	ELISA, IHC, WB
Cited applications:	WB
Species specificity:	Human, Mouse; other species not tested.
Cited species:	Mouse
Calculated Claudin 1 MW:	211aa, 23 kDa
Observed Claudin 1 MW:	23-25 kDa
Positive WB detected in	Mouse skin tissue, mouse liver tissue, mouse thymus tissue
Positive IHC detected in	Human skin tissue, human cervical cancer tissue, human liver tissue, human oesophagus cancer tissue, human skin cancer tissue, mouse colon tissue
Recommended dilution:	WB: 1:200-1:2000 IHC: 1:20-1:200

Application key: WB = Western blotting, IHC = Immunohistochemistry, IF = Immunofluorescence, IP = Immunoprecipitation

Immunogen information

Immunogen:	Ag3713
GenBank accession number:	BC012471
Gene ID (NCBI):	9076
Full name:	Claudin 1

Product information

Purification method:	Antigen affinity purification
Storage:	PBS with 0.02% sodium azide and 50% glycerol pH 7.3. Store at -20°C.