

## TBCA Polyclonal Antibody

Catalog number: 12304-1-AP

Size: 41 µg/150 µl

Source: Rabbit

Isotype: IgG

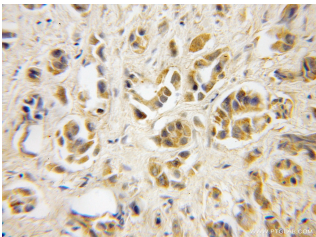
Synonyms:

TBCA; CFA, TBCA, TCP1

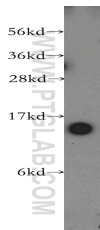
chaperonin cofactor A, tubulin

folding cofactor A, Tubulin

specific chaperone A



Immunohistochemical of paraffin-embedded human prostate cancer using 12304-1-AP (TBCA antibody) at dilution of 1:50 (under 10x lens)



human brain tissue were subjected to SDS PAGE followed by western blot with 12304-1-AP (TBCA antibody) at dilution of 1:500

### Applications

Tested applications:	ELISA, WB, IHC
Cited applications:	IHC, WB
Species specificity:	Human, Mouse, Rat; other species not tested.
Cited species:	Human
Calculated TBCA MW:	108aa, 13 kDa
Observed TBCA MW:	13 kDa
Positive WB detected in:	Human brain tissue, HeLa cells
Positive IHC detected in:	Human prostate cancer tissue
Recommended dilution:	WB: 1:500-1:5000 IHC: 1:20-1:200

Application key: WB = Western blotting, IHC = Immunohistochemistry, IF = Immunofluorescence, IP = Immunoprecipitation

### Immunogen information

Immunogen:	Ag2950
GenBank accession number:	BC018210
Gene ID (NCBI):	6902
Full name:	Tubulin folding cofactor A

### Product information

Purification method:	Antigen affinity purification
Storage:	PBS with 0.1% sodium azide and 50% glycerol pH 7.3. Store at -20°C.