

## Caspase 8/p18 Polyclonal Antibody

Catalog number: 13423-1-AP

Size: 70 µg/150 µl

Source: Rabbit

Isotype: IgG

Synonyms:

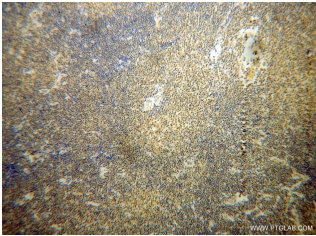
CASP8; Apoptotic protease

Mch 5, Casp 8, CASP8, Caspase

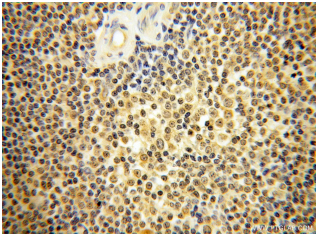
8, Caspase 8/p18, FADD like

ICE, FLICE, ICE like apoptotic

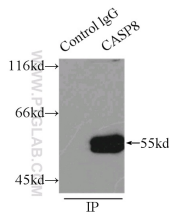
protease 5, MCH5



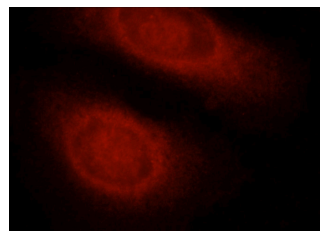
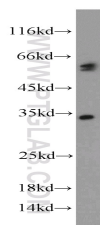
Immunohistochemical of paraffin-embedded human lymphoma using 13423-1-AP(CASP8 antibody) at dilution of 1:50 (under 10x lens)



Immunohistochemical of paraffin-embedded human lymphoma using 13423-1-AP(CASP8 antibody) at dilution of 1:50 (under 40x lens)



IP Result of anti-CASP8 (IP:13423-1-AP, 3µg; Detection:13423-1-AP 1:500) with HeLa cells lysate 2500µg.



### Background

CASP8, also named as MCH5, MACH, FLICE, and CAP4, belongs to the peptidase C14A family. It may participate in the GZMB apoptotic pathways and functions as an upstream regulator in a-bisabolol-induced apoptosis. CASP8 catalyzes an essential intermediate step in the ubiquitination and proteasome-mediated degradation of IRF3(PMID:21816816 ). It may control diabetic embryopathy-associated apoptosis via regulation of the Bid-stimulated mitochondrion/caspase-9 pathway(PMID:19194987). CASP8 is expressed as nine isoforms by alternative splicing with the molecular mass from 26 kDa to 62 kDa.

### Applications

|                              |  |
|------------------------------|--|
| Tested applications:         | ELISA, WB, IHC, IP, IF   |
| Cited applications:          | IF, WB   |
| Species specificity:         | Human, Mouse; other species not tested.                                    |
| Cited species:               | Human, mouse, rat  |
| Calculated Caspase 8/p18 MW: | 538aa,62 kDa   |
| Observed Caspase 8/p18 MW:   | 50-55 kDa,25-32 kDa  |
| Positive WB detected in      | HepG2 cells, HeLa cells, Raji cells, RAW264.7 cells, UV treated Hela cells |
| Positive IP detected in      | HeLa cells   |
| Positive IHC detected in     | Human lymphoma tissue, human colon tissue                                  |
| Positive IF detected in      | HepG2 cells  |
| Recommended dilution:        | WB: 1:200-1:2000<br>IP: 1:200-1:2000<br>IHC: 1:20-1:200<br>IF: 1:10-1:100  |

Application key: WB = Western blotting, IHC = Immunohistochemistry, IF = Immunofluorescence, IP = Immunoprecipitation

### Immunogen information

|                           |   |
|---------------------------|---|
| Immunogen:                | Ag4214  |
| GenBank accession number: | BC028223  |
| Gene ID (NCBI):           | 841   |
| Full name:                | Caspase 8, apoptosis-related cysteine peptidase |

### Product information

|                      |  |
|----------------------|--|
| Purification method: | Antigen affinity purification  |
| Storage:             | PBS with 0.02% sodium azide and 50% glycerol pH 7.3. Store at -20°C. |

HepG2 cells were subjected to SDS PAGE followed by western blot with 13423-1-AP(CASP8 antibody) at dilution of 1:1000

Immunofluorescent analysis of HepG2 cells using 13423-1-AP( Caspase 8 Antibody) at dilution of 1:25 and Rhodamine-Goat anti-Rabbit IgG