

EIF2B3 Polyclonal Antibody

Catalog number: 11296-2-AP

Size: 20 µg/150 µl

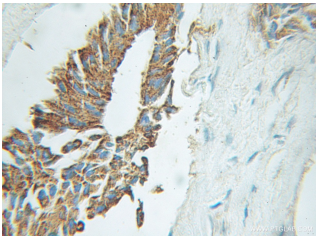
Source: Rabbit

Isotype: IgG

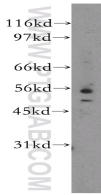
Synonyms:

EIF2B3; EIF 2B, EIF2B3,

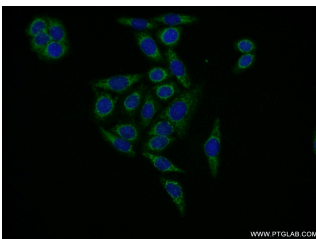
EIF2Bgamma



Immunohistochemical of paraffin-embedded human prostate cancer using 11296-2-AP (EIF2B3 antibody) at dilution of 1:50 (under 10x lens)



HeLa cells were subjected to SDS PAGE followed by western blot with 11296-2-AP (EIF2B3 antibody) at dilution of 1:300



Immunofluorescent analysis of HeLa cells using 11296-2-AP (EIF2B3 Antibody) at dilution of 1:50 and Alexa Fluor 488-conjugated AffiniPure Goat Anti-Rabbit IgG(H+L)

Applications

| | |
|--------------------------|---|
| Tested applications: | ELISA, WB, IHC, IF |
| Species specificity: | Human, Mouse, Rat; other species not tested. |
| Calculated EIF2B3 MW: | 44 kDa, 50 kDa |
| Observed EIF2B3 MW: | 50 kDa |
| Positive WB detected in | HeLa cells |
| Positive IHC detected in | Human prostate cancer tissue |
| Positive IF detected in | HeLa cells |
| Recommended dilution: | WB: 1:200-1:1000 IHC: 1:20-1:200 IF: 1:20-1:200 |

Application key: WB = Western blotting, IHC = Immunohistochemistry, IF = Immunofluorescence, IP = Immunoprecipitation

Immunogen information

| | |
|---------------------------|---|
| Immunogen: | Ag1809 |
| GenBank accession number: | BC018728 |
| Gene ID (NCBI): | 8891 |
| Full name: | Eukaryotic translation initiation factor 2B, subunit 3 gamma, 58kDa |

Product information

| | |
|----------------------|---|
| Purification method: | Antigen affinity purification |
| Storage: | PBS with 0.1% sodium azide and 50% glycerol pH 7.3. Store at -20°C. |