

FAF1 Polyclonal Antibody

Catalog number: 10271-1-AP

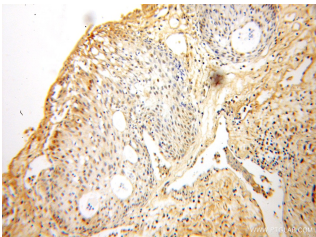
Size: 20 µg/150 µl

Source: Rabbit

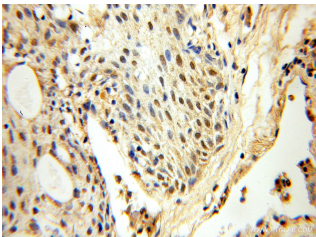
Isotype: IgG

Synonyms:

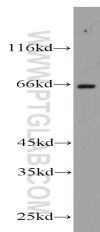
FAF1; CGI 03, FAF1, FAS associated factor 1, FLJ37524, hFAF1, HFAF1s, UBXD12, UBXN3A



Immunohistochemical of paraffin-embedded human prostate cancer using 10271-1-AP (FAF1 antibody) at dilution of 1:50 (under 10x lens)



Immunohistochemical of paraffin-embedded human prostate cancer using 10271-1-AP (FAF1 antibody) at dilution of 1:50 (under 40x lens)



HeLa cells were subjected to SDS PAGE followed by western blot with 10271-1-AP (FAF1 antibody) at dilution of 1:1000

Background

FAF1 was detected most abundant in testis, slightly less abundant in skeletal muscle and heart, followed by prostate, thymus, ovary, small intestine, and colon, but not in the peripheral blood leukocytes. The N-terminal region (amino acid 1~201) including the upstream ubiquitin homology domain of hFAF1 could bind with the death domain of Fas, which mediates programmed cell death, also called apoptosis, in a number of organ systems, notably the immune and nervous systems.

Applications

Tested applications:	ELISA, WB, IHC
Cited applications:	IF, IHC, WB
Species specificity:	Human, Mouse, Rat; other species not tested.
Cited species:	Human, mouse
Calculated FAF1 MW:	74 kDa and 40 kDa
Observed FAF1 MW:	66-74kd
Positive WB detected in	HeLa cells, HEK-293 cells, K-562 cells, mouse brain tissue, mouse testis tissue
Positive IHC detected in	Human prostate cancer tissue
Recommended dilution:	WB: 1:200-1:2000 IHC: 1:20-1:200

Application key: WB = Western blotting, IHC = Immunohistochemistry, IF = Immunofluorescence, IP = Immunoprecipitation

Immunogen information

Immunogen:	Ag0407
GenBank accession number:	BC004970
Gene ID (NCBI):	11124
Full name:	Fas (TNFRSF6) associated factor 1

Product information

Purification method:	Antigen affinity purification
Storage:	PBS with 0.1% sodium azide and 50% glycerol pH 7.3. Store at -20°C.