

EPHA8 Polyclonal Antibody

Catalog number: 13724-1-AP

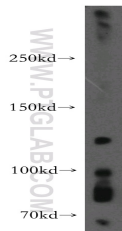
Size: 20 µg/150 µl

Source: Rabbit

Isotype: IgG

Synonyms:

EPHA8; EEK; HEK3; KIAA1459



mouse brain tissue were subjected to SDS PAGE followed by western blot with 13724-1-AP(EPHA8 Antibody) at dilution of 1:800

Applications

| | |
|--------------------------|--|
| Tested applications: | ELISA, WB |
| Species specificity: | Human, mouse, rat; other species not tested. |
| Positive WB detected in: | Mouse brain tissue |
| Calculated EPHA8 MW: | 1005aa,111kd |
| Observed EPHA8 MW: | 120kd |
| Recommended dilution: | WB: 1:200-1:2000 |

Application key: WB = Western blotting, IHC = Immunohistochemistry, IF = Immunofluorescence, IP = Immunoprecipitation, FC = Flow cytometry

Immunogen information

| | |
|---------------------------|-----------------|
| Immunogen: | Ag4503 |
| GenBank accession number: | BC038796 |
| Gene ID (NCBI): | 2046 |
| Full name: | EPH receptor A8 |

Product information

| | |
|----------------------|--|
| Purification method: | Antigen affinity purification |
| Storage: | PBS with 0.02% sodium azide and 50% glycerol pH 7.3. Store at -20°C. |