

MEPCE Polyclonal Antibody

Catalog number: 11526-1-AP

Size: 37 µg/150 µl

Source: Rabbit

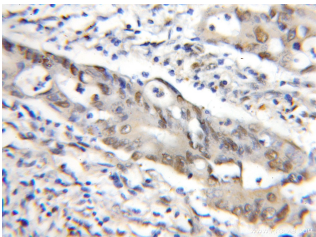
Isotype: IgG

Synonyms:

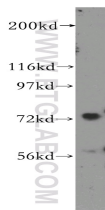
MEPCE; Bin3 homolog,

FLJ20257, MEPCE,

methylphosphate capping enzyme



Immunohistochemical of paraffin-embedded human colon cancer using 11526-1-AP (MEPCE antibody) at dilution of 1:50 (under 10x lens)



K-562 cells were subjected to SDS PAGE followed by western blot with 11526-1-AP (MEPCE antibody) at dilution of 1:400

Background

MEPCE is a Component of the 7SK snRNP complex, and a S-adenosyl-L-methionine-dependent methyltransferase that adds a methylphosphate cap at the 5'-end of 7SK snRNA, which leads to its stabilization.

Applications

Tested applications:	ELISA, WB, IHC
Cited applications:	IP, WB
Species specificity:	Human, Mouse, Rat, Zebrafish; other species not tested.
Cited species:	Human, zebrafish
Calculated MEPCE MW:	689aa, 74 kDa
Observed MEPCE MW:	74 kDa
Positive WB detected in	K-562 cells
Positive IHC detected in	Human colon cancer tissue
Recommended dilution:	WB: 1:500-1:5000 IHC: 1:20-1:200

Application key: WB = Western blotting, IHC = Immunohistochemistry, IF = Immunofluorescence, IP = Immunoprecipitation

Immunogen information

Immunogen:	Ag2092
GenBank accession number:	BC018935
Gene ID (NCBI):	56257
Full name:	Methylphosphate capping enzyme

Product information

Purification method:	Antigen affinity purification
Storage:	PBS with 0.1% sodium azide and 50% glycerol pH 7.3. Store at -20°C.