

CTSO Polyclonal Antibody

Catalog number: 14296-1-AP

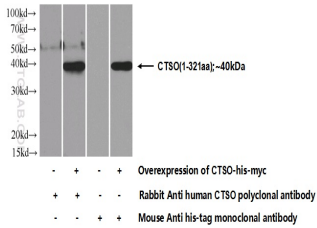
Size: 39 µg/150 µl

Source: Rabbit

Isotype: IgG

Synonyms:

CTSO; cathepsin O, CTSO,
CTSO1



Transfected HEK-293 cells were subjected to SDS PAGE followed by western blot with 14296-1-AP(CTSO Antibody) at dilution of 1:700

Applications

Tested applications:	ELISA, WB
Species specificity:	Human,Mouse,Rat; other species not tested.
Calculated CTSO MW:	36 kDa
Observed CTSO MW:	36 kDa
Positive WB detected in	Transfected HEK-293 cells
Recommended dilution:	WB: 1:200-1:2000

Application key: WB = Western blotting, IHC = Immunohistochemistry, IF = Immunofluorescence, IP = Immunoprecipitation

Immunogen information

Immunogen:	Ag5651
GenBank accession number:	BC049206
Gene ID (NCBI):	1519
Full name:	Cathepsin O

Product information

Purification method:	Antigen affinity purification
Storage:	PBS with 0.1% sodium azide and 50% glycerol pH 7.3. Store at -20°C.