

IRGC Polyclonal Antibody

Catalog number: 14090-1-AP

Size: 24 µg/150 µl

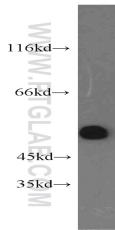
Source: Rabbit

Isotype: IgG

Synonyms:

IRGC; CINEMA; IRGC1; ligp5;

R30953_1



mouse testis tissue were subjected to SDS PAGE followed by western blot with 14090-1-AP(IRGC Antibody) at dilution of 1:1000

Applications

Tested applications:	ELISA, WB
Species specificity:	Human, mouse, rat; other species not tested.
Positive WB detected in:	Mouse testis tissue
Calculated IRGC MW:	50kd
Observed IRGC MW:	50kd
Recommended dilution:	WB: 1:500-1:5000

Application key: WB = Western blotting, IHC = Immunohistochemistry, IF = Immunofluorescence, IP = Immunoprecipitation, FC = Flow cytometry

Immunogen information

Immunogen:	Ag5279
GenBank accession number:	BC066939
Gene ID (NCBI):	56269
Full name:	Immunity-related GTPase family, cinema

Product information

Purification method:	Antigen affinity purification
Storage:	PBS with 0.02% sodium azide and 50% glycerol pH 7.3. Store at -20°C.