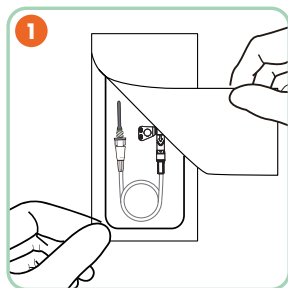
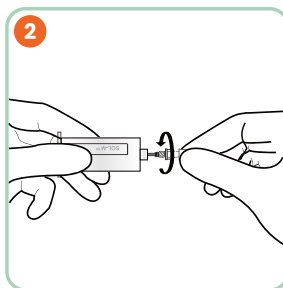


Instructions for Use: This document is intended to provide instruction on how to safely and properly use the Sol-Guard Safety Pull-Button Blood Collection Set only. Be sure to follow and practice your facility guidelines for phlebotomy.



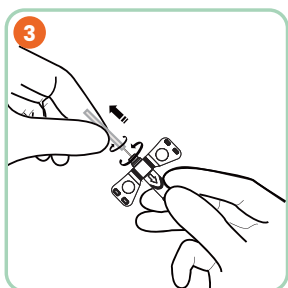
Open the easy peel apart blister packaging.



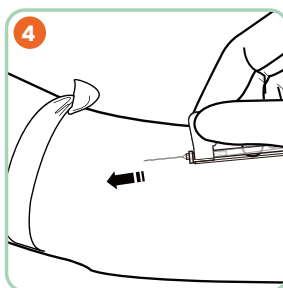
Thread the tube holder clockwise to Luer adaptor pre-attached to the device tubing.

Skip this step for the version with pre-attached holder

Check that the luer adaptor is firmly attached to device tubing

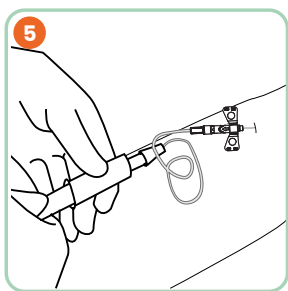


Remove the protective cap prior to needle insertion.



Anchor vein with non-dominant hand. Insert needle at shallow angle while observing one of the following best practice recommendations:

- Holding the needle hub (Thumb behind activation button)
- Holding both wings together
- Holding one wing

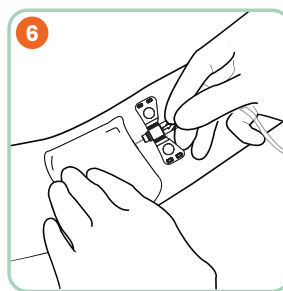


Watch for a flashback of blood to confirm that needle is in the vein and ready to draw blood

Place the first blood specimen tube into the tube holder

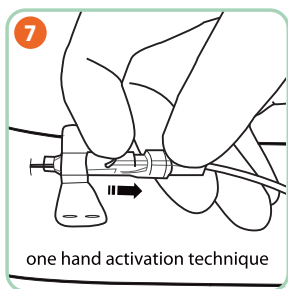
Monitor the tubes filling, while stabilizing the tube with your thumb

Complete blood collection according to your facilities guidelines



Place a sterile pad over the insertion site.

Keep fingers away from the insertion site.

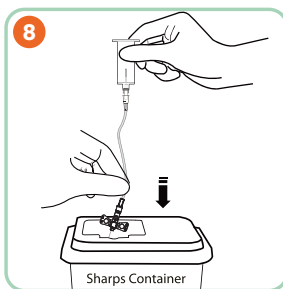


Activate safety mechanism while the needle is still in the vein by using index finger of the dominant hand.

Pull the button back following the direction indicated by black arrow.

Ensure the tubing is not blocked by the fingers.

Apply pressure to the insertion site to stop the bleeding.



Dispose of the needle according to your facilities guidelines (Sharps Container)



Caution:

Federal law (USA) restricts device to sale by or on the order of a physician or other licensed practitioner. Follow standard infection control precautions as specified by the Centers for Disease Control and Prevention (USA) or local equivalent.